



## PROJECT CASE STUDY

### Volac, Felinfach



### Volac Case Study:

**Volac** International is one of Europe's leading suppliers of nutritional dairy products for the food, drink and agriculture industries. As part of their plant upgrade in Felinfach, West Wales, **Kellwood's** designs were selected for the supply of internal and external lighting to meet strict technical parameters.

Kellwood's expertise was called upon after the initial proposals, using a variety of suppliers, struggled to meet technical challenges without disproportionately increased costs. Bringing the provision of all lighting under one roof allowed for a faster, more cohesive and more cost effective solution. Product variation was minimised where possible to reduce complexity and simplify installation management.





## Commercial Areas:

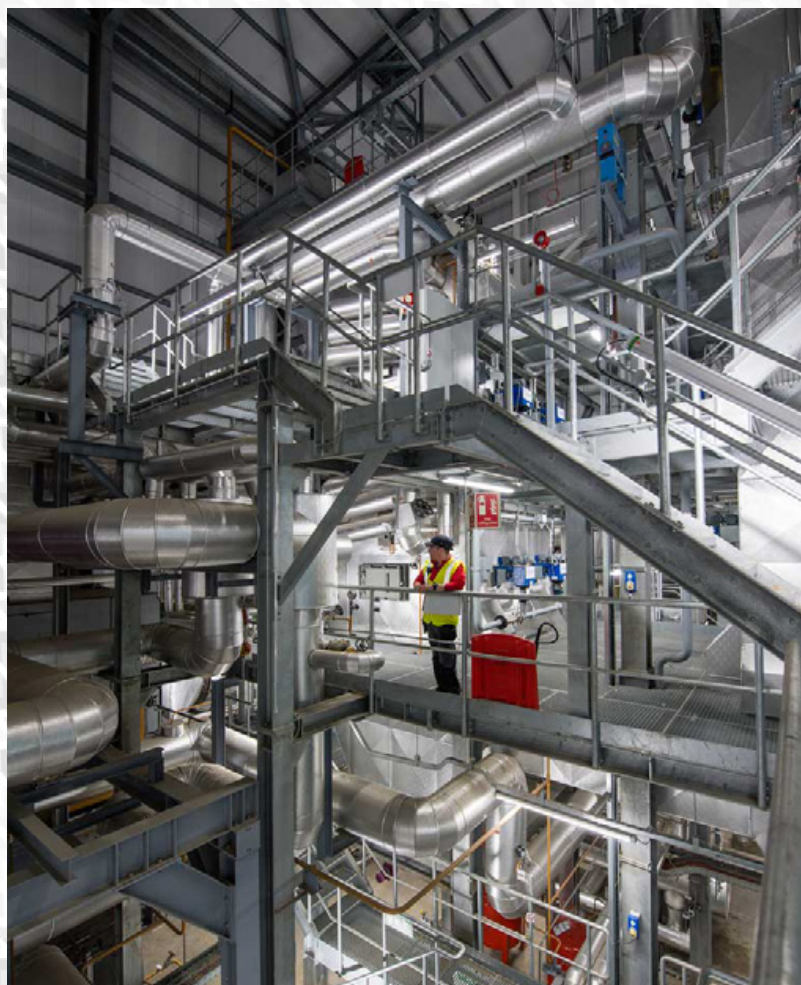
Offices, corridors and customer focussed areas were aesthetically split using panels, downlights and circular bulkheads, while the use of integrated emergency variants reduced installation cost.



## Industrial Areas:

With a maze of complex pipework in the boiler hall, ensuring adequate lux levels and uniformity in all areas was potentially difficult. Kellwood's solution used roof mounted high

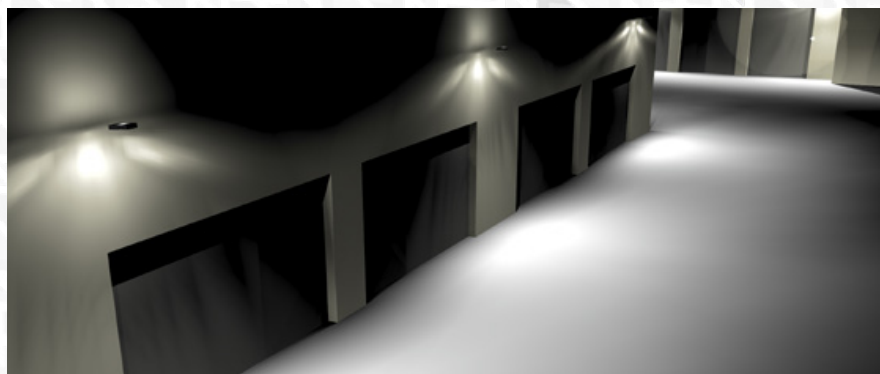
bays to provide general area light and vapour proof fittings to illuminate shadowed areas and add task lighting where required.





## Externals:

This presented the biggest challenge of the project, with several protected bat colonies nesting adjacent to the plant. Extreme care was required with wattages, colour temperatures, beam angles and aiming directions to ensure lux levels were high enough where required but low enough in sensitive areas to minimise photo-biological effects to wildlife. Optional backspill guards and a large range of beam angles on the specified streetlights provided the precision aiming necessary to meet the exacting requirements, with lighting designs used to prove suitability.



## Supply:

Working closely with the contractor and their preferred wholesaler, delivery was phased to allow a smooth rolling install without worrying about on site storage for large volumes of stock.





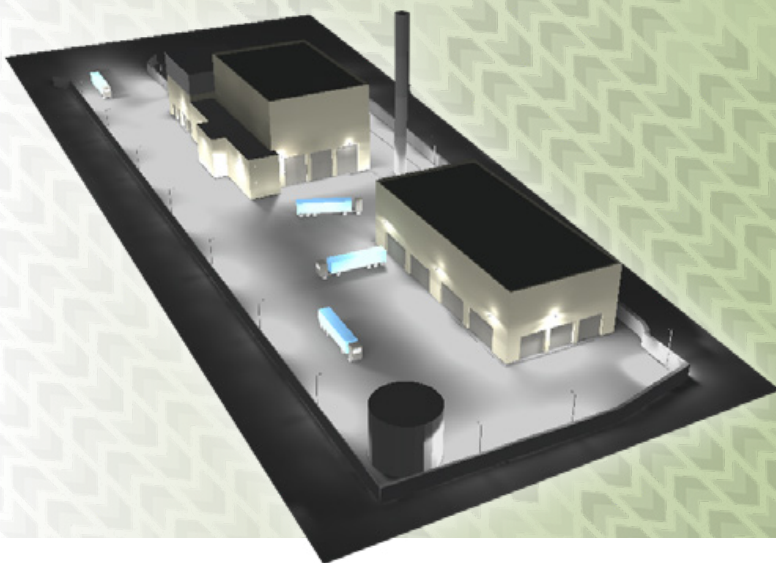
## Design Features – Internal:

- Office, Industrial & Customer Facing Areas
- Integrated Emergency lights for reduced installation time and cost
- Minimised product variation for reduced installation complexity
- Phased delivery for smooth rolling installation.



## Design Features – External:

- 'Bat Friendly' lighting for minimised impact on local ecosystem
- Zoned lux levels for specific area usage
- Tailored optics and optional backspill guards for precision beam control
- Custom manufactured bracketry supplied for turnkey package.



“ I’ve been in the contracting industry for over 20 years. I’ve never used better external kit. Fantastic...”

volac