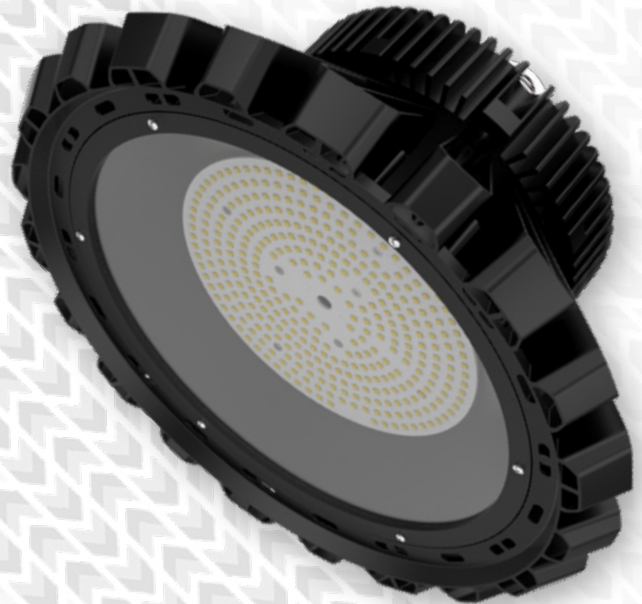




Multi-purpose,
industrial & commercial
lighting hardware,
developed for application in
warehouses, factories, workshops,
& production areas

60W-200W series power range
- Impact, ingress, & corrosion
resistant fitting - 140lm/W family
efficacy - 2no. general purpose &
task-specific optics - Superior glare
control through recessed light
engine & optional diffusers - Plug-
&-play intelligent control sensor

CE, RoHS, DLC, & cETLus
international product marks



Hamilton 2 Series *High Bay Lights*

CDN:SPEC124REV6

Technical Specifications Summary



Performance Summary:

Code (Series-Wattage/Size)	HAM2-60	HAM2-100	HAM2-120	HAM2-150	HAM2-200
Nominal Power	60W	100W	120W	150W	200W
Luminaire Efficacy @ CRI>80, 4000K CCT	135lm/W	135lm/W	136lm/W	133lm/W	134lm/W
Lumen Output @ CRI>80, 4000K CCT	8,100lm	13,500lm	16,200lm	19,950lm	26,800lm
Lumen Maintenance (TM21 Reported)	L70B50 ≥50,000 hours				
Certification	CE, RoHS, DLC, cETLus				
Product Warranty	5 Years				

Light Source and Photometric Parameters:

Chip Brand, Model, & Size	Nichia 2W757GRTV1				
Light Emission	Direct				
CCT	5000K, (3000K, 4000K, 6000K optional)				
CRI	≥70, (≥80 optional)				
Diffusers	Clear, (Milky, Frosted, Prismatic optional)				
Symmetric Light Distribution	110°, (90° optional)				

Electrical Parameters¹:

System Operating Power	60W	100W	120W	150W	200W
Driver Brand	Mean Well				
Driver Model	HBG-100		HBG-160		HBG-200
System Power Factor	>0.95				
Typical Driver Lifetime	>50,000 hours				
Input Voltage	100-277VAC				
Input Frequency	50-60Hz				
Qty of Drivers per Light	1				
Inrush Current Per Driver @ 230VAC measured at 50% Ipeak (Peak/Duration)	60A/550μs		65A/550μs		85A/600μs
Recommended Lights per Circuit (16A Type C MCB)	≤8pcs at Maximum Product Power Note: MCB may allow for an increased number of lights per circuit for the lower powered versions		≤7pcs at Maximum Product Power Note: MCB may allow for an increased number of lights per circuit for the lower powered versions		≤7pcs
Power Factor	>0.95				
THD	<15% (100-277VAC)				

Environmental Parameters:

IP Rating	IP65				
IK Rating	IK08				
Ambient Usage Tolerance	-30°C to 50°C				
Ambient Storage Tolerance	-40°C to 65°C				
Ambient Humidity Tolerance	15% to 90% RH				

Physical/Mechanical Parameters:

Product Dimensions: ØxH (mm)	360 x 230		
Electrical Connection	1500mm Cable		
Fixture Weight²	4.8kg	5.0kg	5.6kg
Fixture Primary Material(s)	Aluminium Alloy		
Fixture Finish	Powder Coated		
Lens(es) Materials	UV Stabilised Polycarbonate		

Technical Specifications Summary

Code (Series-Wattage/Size)	HAM2-60	HAM2-100	HAM2-120	HAM2-150	HAM2-200
Dimming/Controls Parameters:					
Dimming Options	1-10V, DALI				
Compatible intelligent lighting systems	Wireless Controls and Monitoring				
Options/Accessories:					
Mounting Styles	Eye Bolt, Universal Bracket, Extended Universal Bracket				
Miscellaneous Accessories	Emergency				
Available Product Colours	Black, White, Grey, Green, Red				

¹ Electrical Parameter data is for D1 drivers, unless otherwise stated

² Excludes bracketry. Refer to the Packaging Weights & Dimensions data sheet for bracketry and accessory weights

All stated values should be considered indicative only. Technical data is provided from sample luminaires and construction components as assessed by OEM(s) under industry-standard, laboratory conditions. In practice, stated values can vary. Kellwood Lighting operates a policy of continual product improvement. Our luminaires' capabilities are regularly enhanced to outperform in-class market alternatives. Please contact our technical team directly for clarifications prior to purchase. All images depicted should be considered indicative only. Stated product warranty periods do not include associated labour costs. Stated product warranty periods are for UK projects only. For international projects, please contact our offices directly. Optional upgrades can often affect or supersede unit technical parameters, capabilities, and warranties. It is the responsibility of the purchasing authority to ensure selected hardware is suitable for application. For further documentation, including Returns Policy and Conditions of Unit Failure, please contact our offices. Hazardous area documentation (eg. ATEX) are issued to OEM codes. WEEE compliance reference code: WEE/MP3838PR/SCH. Please do not look directly at LED lighting products during operation.

This datasheet & corresponding certification should be reviewed by a competent person to ensure project suitability.

©2020 Kellwood Engineering Ltd. All rights reserved.

Features Summary



Mounting Options

Eye Bolt, universal bracket



Optional Fitting Colours

Black, custom (subject to MOQ)



Environmental Protection

IP65 c/w corrosion-resistant powder coat, 304 stainless steel exposed fixtures



Impact Protection

IK08 rated



Distribution

2no. optic variants are available for general & task-specific applications



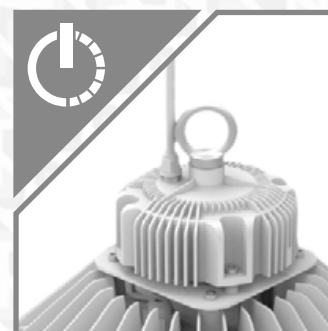
Horizontal Glare Reduction

65mm recessed light source significantly reduces horizontal glare, compared to flush-mounted market alternatives



Integrated Emergency

3hr E3R1 integrated emergency option in IP20 enclosure for optimised thermal performance



Driver Protocols

Non-dimming, 0-10V, 1-10V, DALI



Sensor(s)

Integrated (see 'Plug-&Play'), standalone (single or multiple luminaires per sensor options)



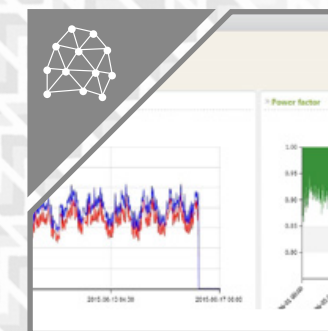
Integrated 'Plug-&Play' Sensor

Occupancy, multi-step dimming - System counterbalanced & rotation-resistant



Sensor Functions

Occupancy, multi-step dimming, photocell, daylight harvesting



Advanced Controls

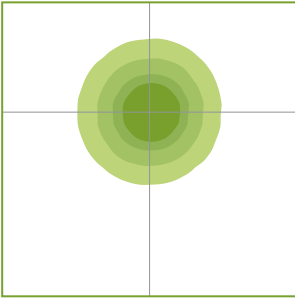
System energy reporting, data monitoring, IoT (wireless/wired) networks

Please note - images shown are intended to be illustrative only. For exact data, please refer to specific product photometry, available for download from our website.

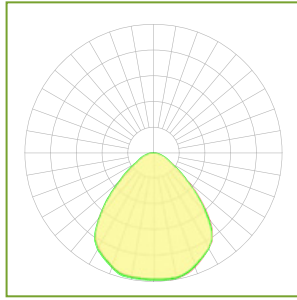
Indicative Product Photometry

90° Optic

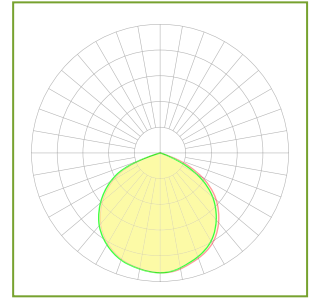
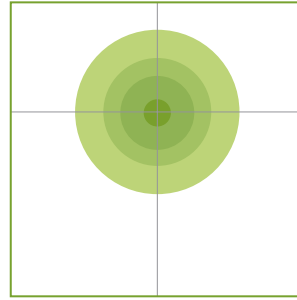
ISOLUX DIAGRAM



POLAR DIAGRAM

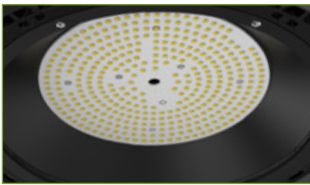


120° Optic



Diffusers

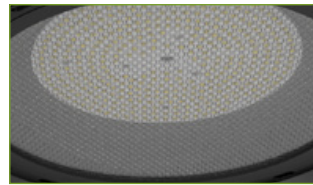
This series is available with the following diffusers. Each diffuser will have a varying effect on photometric distribution and intensity. Please refer to downloadable photometrics for exact data.



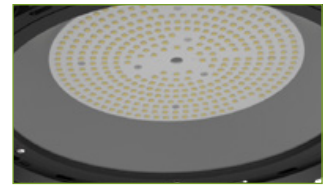
Clear Optic (Various Beam Angles)



Milky Diffuser

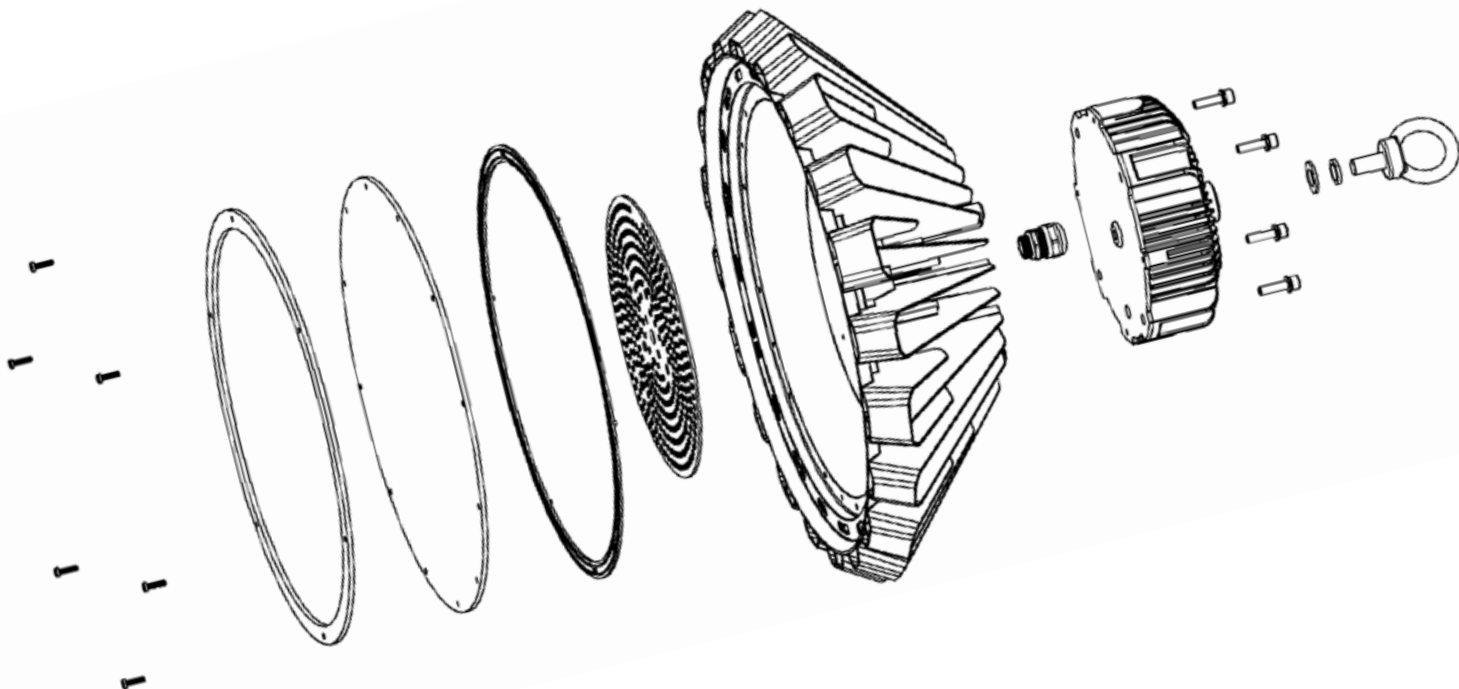


Prismatic Diffuser



Frosted Diffuser

Exploded View





Standard product code fields are presented as:
Further customisation may be available - please contact us if required



Product Ordering Codes

PRODUCT	POWER	CRI & CCT	OPTIC	DRIVER	MOUNTING	COLOUR	MODIFICATIONS
HAM2	60 60W	730 CRI >70, 3000K	90 90° CIRCULAR	D1 NON-DIM	EB EYE BOLT	BL BLACK	E3R1 INTEGRATED 3 HOUR 5.6W MAINTAINED EMERGENCY - REMOTE TEST WITH NiCd BATTERY
	100 100W	740 CRI >70, 4000K	120 120° CIRCULAR	D2 1-10V	UB UNIVERSAL BRACKET	WH WHITE	
	120 120W	750 CRI >70, 5000K	FR FROSTED DIFFUSER	D3 DALI	UBE ² EXTENDED UNIVERSAL BRACKET	GR GREY	
	150 150W	760 CRI >70, 6000K	MI MILKY DIFFUSER	D4 ¹ NON-DIM (HLG)		GN GREEN	
	200 200W	830 CRI >80, 3000K	PR PRISMATIC DIFFUSER	D5 ¹ 1-10V (HLG)		RD RED	
		840 CRI >80, 4000K					
		850 CRI >80, 5000K					
		860 CRI >80, 6000K					

GENERAL NOTES:

1. IF MORE THAN ONE MODIFICATION IS REQUIRED, SEPARATE EACH MODIFICATION WITH A HYPHEN AT THE END OF THE PRODUCT CODE
2. PLEASE ENSURE SELECTION OF COMPATIBLE DRIVER FOR OCCUPANCY SENSORS WITH DIMMING FUNCTIONALITY
3. PLEASE NOTE THAT MODIFICATIONS WHICH AFFECT LIGHT OUTPUT HAVE SEPARATE PHOTOMETRIC FILES IDENTIFIED WITH "...+(MODIFICATION)"
4. ALTERNATIVE DRIVERS MAY BE AVAILABLE - PLEASE CONTACT OUR OFFICE FOR FURTHER DETAILS
5. IF PRODUCT IS CUSTOMISED, CODES WILL BE ALTERED AS NECESSARY

Product Ordering Code Examples:

HAM2-100-750-120-D1-EB-BL

DRIVER MANUFACTURER					
POWER	D1	D2	D3	D4	D5
60 60W	Mean Well	Mean Well	Mean Well	Mean Well HLG	Mean Well HLG
100 100W	Mean Well	Mean Well	Mean Well	Mean Well HLG	Mean Well HLG
120 120W	Mean Well	Mean Well	Mean Well	Mean Well HLG	Mean Well HLG
150 150W	Mean Well	Mean Well	Mean Well	Mean Well HLG	Mean Well HLG
200 200W	Mean Well	Mean Well	Mean Well	Mean Well HLG	Mean Well HLG

CONTACT OUR OFFICE FOR FURTHER INFORMATION ON DRIVER PARAMETERS

¹ Emergency modifications are supplied with HLG drivers

² Specify with the emergency variant

ACCESSORIES
HAM2-90 BEAM ANGLE MODIFIER - 90° CIRCULAR
JB1 IP68 13A IN-LINE CONNECTOR
JB1-(LENGTH IN METRES) IP68 13A IN-LINE CONNECTOR WITH CABLE TO REQUESTED LENGTH
HAM2-UB UNIVERSAL BRACKET

