

- High 140lm/W output, 1-10V dimmable option available with built-in Microwave or PIR sensor
- Surface mount IP65 luminaire available with integrated 3hr emergency back up
- Suitable in operating temperature -30° to 50°C



CE, RoHS, cETLus, SAA
international product marks

Broxburn 2 Series *Car Park Canopy Light*

CDN:SPEC179REV3

◀ Technical Specifications Summary



Performance Summary:

Code (Series-Wattage/Size)	BRX2-40	BRX2-60
Nominal Power	40W	60W
Luminaire Efficacy @ CRI>70, 5000K CCT	150lm/W	148lm/W
Lumen Output @ CRI>70, 5000K CCT	6,000lm	8,880lm
Lumen Maintenance (TM21 Reported)	L70B50 ≥50,000 hours @ Ta 30°C	
Certification	CE, RoHS, cETLus, SAA	
Product Warranty	5 Years	

Light Source and Photometric Parameters:

Chip Brand, Model, & Size	Nichia GRT-V3
Chip Efficacy @ CRI>70, 5000K CCT	157lm/W @ 150mA Rank P20
Light Emission	Direct
CCT	5000K, (3000K, 4000K optional)
CRI	≥70, (≥80 optional)
SDCM	<5
Diffusers	Clear
Symmetric Light Distribution	150°

Electrical Parameters¹:

System Operating Power	40W	60W
Driver Brand	Sosen	
Driver Model	SS-50H	SS-60H
System Power Factor	>0.9	
Typical Driver Lifetime	55,000 hours Tc 75°C	
Input Voltage	100-240VAC	
Input Frequency	50-60Hz	
Qty of Drivers per Light	1	1
Inrush Current Per Driver @ 230VAC measured at 50% I _{peak} (Peak/Duration)	40A/450µs	50A/450µs
Power Factor	>0.9	
THD	<10% (100-240VAC), <20% (100-277VAC)	
Insulation Class	Class 1	
Surge Protection/Fusing	4kV line-line, 6kV line-earth	

Technical Specifications Summary

Code (Series-Wattage/Size)	BRX2-40	BRX2-60
Environmental Parameters:		
IP Rating	IP65	
IK Rating	IK08	
Ambient Usage Tolerance	-30°C to 50°C	
Ambient Storage Tolerance	-30°C to 50°C	
Driver automatic turn-off temperature	90°C	
Ambient Humidity Tolerance	15% to 90% RH	
Physical/Mechanical Parameters:		
Product Dimensions: LxWxH (mm)	282 x 252 x 89	282 x 252 x 89
Qty of Modules	1	1
Electrical Connection	Terminal Block	
Fixture Weight²	2.6kg	2.8kg
Fixture Primary Material(s)	Aluminium Alloy	
Fixture Finish	Painted	
Lens(es) Materials	UV Stabilised Polycarbonate	
Dimming/Controls Parameters:		
Dimming Options	1-10V	
Built-in Controls	PIR Sensor, Microwave Sensor	
Options/Accessories:		
Mounting Styles	Surface mounted	
Available Product Colours	Dark Bronze	

¹ Electrical Parameter data is for D1 drivers, unless otherwise stated

² Excludes bracketry. Refer to the Packaging Weights & Dimensions data sheet for bracketry and accessory weights

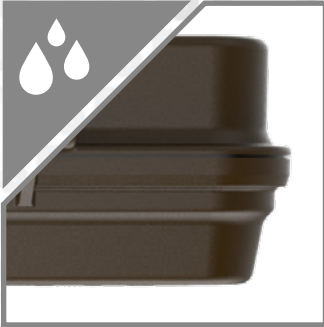
All stated values should be considered indicative only. Technical data is provided from sample luminaires and construction components as assessed by OEM(s) under industry-standard, laboratory conditions. In practice, stated values can vary. Kellwood Lighting operates a policy of continual product improvement. Our luminaires' capabilities are regularly enhanced to outperform in-class market alternatives. Please contact our technical team directly for clarifications prior to purchase. All images depicted should be considered indicative only. Stated product warranty periods do not include associated labour costs. Stated product warranty periods are for UK projects only. For international projects, please contact our offices directly. Optional upgrades can often affect or supersede unit technical parameters, capabilities, and warranties. It is the responsibility of the purchasing authority to ensure selected hardware is suitable for application. For further documentation, including Returns Policy and Conditions of Unit Failure, please contact our offices. Hazardous area documentation (eg. ATEX) are issued to OEM codes. WEEE compliance reference code: WEE/MP3838PR/SCH. Please do not look directly at LED lighting products during operation.

This datasheet & corresponding certification should be reviewed by a competent person to ensure project suitability.

©2020 Kellwood Engineering Ltd. All rights reserved.



Features Summary



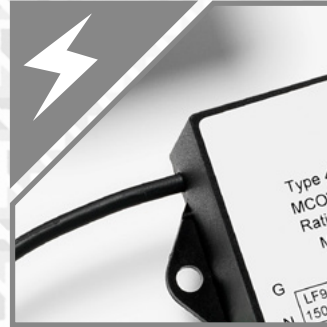
Environmental Protection

IP65 with powder coating finish



Emergency Pack

3hr E3R1 integrated emergency option available



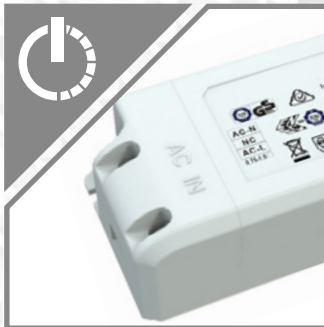
Electrical Protection

4kv/6kv line surge protection ensures internal electrical components are protected in the event of a power surge, extending product lifetime.



User-Friendly

Ease of access to internal components



Driver Protocols

Non-Dim, 1-10V



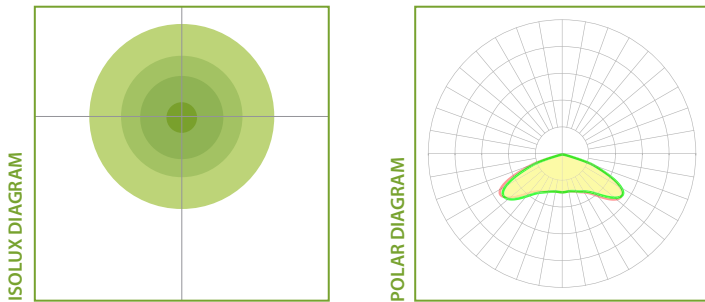
Sensor Functions

Microwave Sensor, PIR Sensor

Please note - images shown are intended to be illustrative only. For exact data, please refer to specific product photometry, available for download from our website.

◀ Indicative Product Photometry

150° Optic



Diffusers

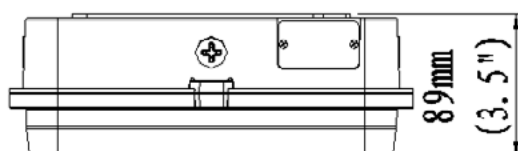
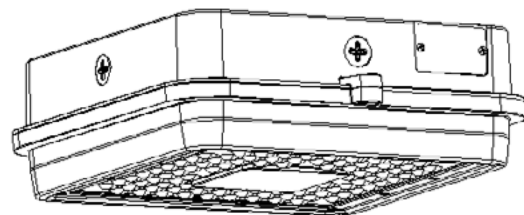
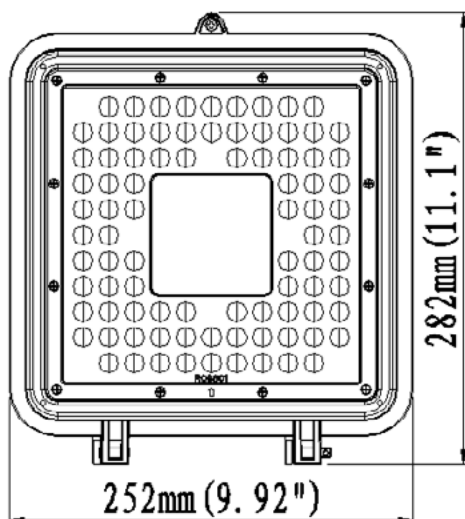
This series is available with the following diffusers. Each diffuser will have a varying effect on photometric distribution and intensity. Please refer to downloadable photometrics for exact data.



Clear Optic (various beam angles)

Colourations on isolux diagrams are qualitative, i.e. the same colour on any two isolux diagrams will not necessarily have the same lux value.

◀ Dimensional Drawings





Standard product code fields are presented as:
Further customisation may be available - please contact us if required



Product Ordering Codes

PRODUCT	POWER	CRI & CCT	OPTIC	DRIVER	COLOUR	MODIFICATIONS
BRX2	40 40W	730 CRI >70, 3000K	150 150° CIRCULAR	D1 NON-DIM	BR DARK BRONZE (BLACK)	P1 PIR SENSOR
	60 60W	740 CRI >70, 4000K		D2 1-10V		M1 MICROWAVE SENSOR
		750 CRI >70, 5000K		D4 NON-DIM		M2 MICROWAVE SENSOR (REMOTE CONTROL)
		830 CRI >80, 3000K		D5 1-10V		E3R1 3HR MAINTAINED EMERGENCY
		840 CRI >80, 4000K				
		850 CRI >80, 5000K				

Product Ordering Code Examples:

BRX2-60-750-150-D1-BL

BRX2-40-850-150-D2-BR-M1-E3R1

GENERAL NOTES:

1. IF MORE THAN ONE MODIFICATION IS REQUIRED, SEPARATE EACH MODIFICATION WITH A HYPHEN AT THE END OF THE PRODUCT CODE
2. PLEASE ENSURE SELECTION OF COMPATIBLE DRIVER FOR OCCUPANCY SENSORS WITH DIMMING FUNCTIONALITY
3. PLEASE NOTE THAT MODIFICATIONS WHICH AFFECT LIGHT OUTPUT HAVE SEPARATE PHOTOMETRIC FILES IDENTIFIED WITH "...+(MODIFICATION)"
4. ALTERNATIVE DRIVERS MAY BE AVAILABLE - PLEASE CONTACT OUR OFFICE FOR FURTHER DETAILS
5. IF PRODUCT IS CUSTOMISED, CODES WILL BE ALTERED AS NECESSARY

DRIVER MANUFACTURER				
POWER	D1	D2	D4	D5
40 40W	Sosen	Sosen	Us	Us
60 60W	Sosen	Sosen	Us	Us

