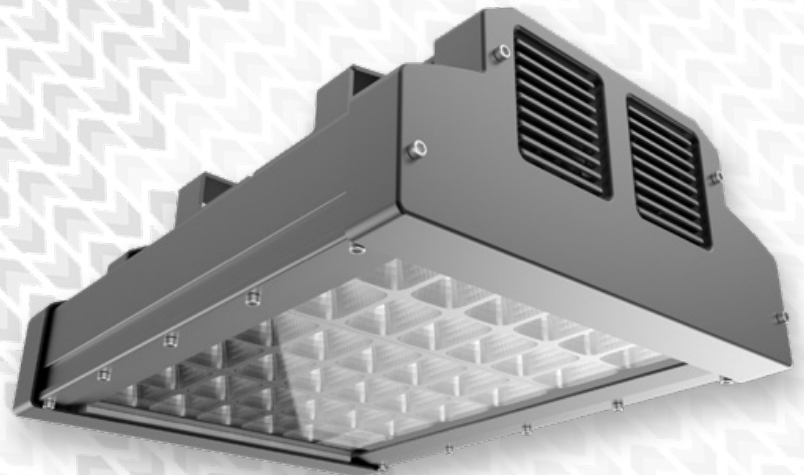




Specialist, super low glare, industrial & commercial lighting hardware, developed for application in warehouses, factories, workshops, production areas, & leisure facilities

120W-310W series power range
- Impact, ingress, & corrosion-resistant fitting - $>150\text{lm/W}$ family efficacy - Refined, asymmetric, general purpose optics c/w advanced colour rendering - $<19\text{UGR}$ capable - Integrated, standalone, & wireless network intelligent control options available

CE, RoHS, DLC, SAA, & CB international product marks



Haldane Series **Low-Glare High Bay Lights**

CDN:SPEC80REV6




Technical Specifications Summary

Nominal Power / Product Class	120W	180W	240W	310W
Nominal Efficacy @ 4000K	152lm/W	154lm/W	157lm/W	148lm/W
Nominal Output @ 4000K	18716lm	28299lm	37,680lm	46152lm
Light Engine & Model	Jufei 2835	Jufei 2835	Jufei 2835	Jufei 2835
Lumen Maintenance (TM21)	L70 ≥50,000 hours	L70 ≥50,000 hours	L70 ≥50,000 hours	L70 ≥50,000 hours
CCT	3000K, 4000K, 5000K	3000K, 4000K, 5000K	3000K, 4000K, 5000K	3000K, 4000K, 5000K
CRI	≥80	≥80	≥80	≥80
Typical UGR	18.8	19	19	18.9
Lens(es)	Clear	Clear	Clear	Clear
Symmetric Distribution	N/A	N/A	N/A	N/A
Asymmetric Distribution (IESNA)	55x75°	55x75°	55x75°	55x75°
Ingress Rating¹	IP65	IP65	IP65	IP65
Impact Resistance	IK08	IK08	IK08	IK08
Ambient Usage Tolerance	-20°C to 50°C	-20°C to 50°C	-20°C to 50°C	-20°C to 50°C
Ambient Storage Tolerance	-40°C to 85°C	-40°C to 85°C	-40°C to 85°C	-40°C to 85°C
Ambient Humidity Tolerance	10% to 80%RH	10% to 80%RH	10% to 80%RH	10% to 80%RH
PSU Manufacturer	Various - See Code Table	Various - See Code Table	Various - See Code Table	Various - See Code Table
PSU Advanced Data	Contact Office	Contact Office	Contact Office	Contact Office
Input Voltage	100-240VAC	100-240VAC	100-240VAC	100-240VAC
Input Frequency	50-60Hz	50-60Hz	50-60Hz	50-60Hz
Power Factor	≥0.9	≥0.9	≥0.9	≥0.9
THD	<20	<20	<20	<20
Product Dimensions (LxWxH)	280 x 290 x 135mm	390 x 290 x 135mm	500 x 290 x 135mm	610 x 290 x 135mm
Cable Dimensions (L)	1.5m	1.5m	1.5m	1.5m
Fixture Weight	7.0kg	8.5kg	10.3kg	12.4kg
Fixture Primary Materials (s)	Aluminium	Aluminium	Aluminium	Aluminium
Fixture Finish	Painted	Painted	Painted	Painted
Lens(es) Materials	Polycarbonate, Tempered Glass	Polycarbonate, Tempered Glass	Polycarbonate, Tempered Glass	Polycarbonate, Tempered Glass
Product Warranty	5 Years	5 Years	5 Years	5 Years

¹Ingress protection of fitting may reduce subject to integrated controls. Please contact our office for more information

Underline (all pages) = supplied as standard

All stated values should be considered indicative only. Technical data is provided from sample luminaires and construction components as assessed by OEM(s) under industry-standard, laboratory conditions. In practice, stated values can vary. Kellwood LED Lighting operates a policy of continual product improvement. Our luminaires' capabilities are regularly enhanced to outperform in-class market alternatives. Please contact our technical team directly for clarifications prior to purchase. All images depicted should be considered indicative only. Stated product warranty periods do not include associated labour costs. Stated product warranty periods are for UK projects only. For international projects, please contact our offices directly. Optional upgrades can often affect or supersede unit technical parameters, capabilities, and warranties. It is the responsibility of the purchasing authority to ensure selected hardware is suitable for application. For further documentation, including Returns Policy and Conditions of Unit Failure, please contact our offices. Hazardous area documentation and product nameplates (eg. ATEX) are issued to OEM codes. WEEE compliance reference code: WEE/MP3838PR/SCH. Please do not look directly at LED lighting products during operation. This datasheet & corresponding certification should be reviewed by a competent person to ensure project suitability.



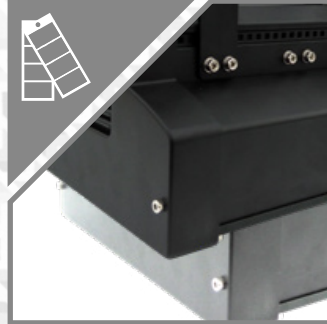


Features Summary



Mounting Options

Universal bracket, twin eye bolts



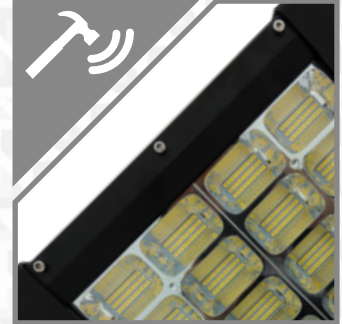
Optional Fitting Colours

Black, white, custom (subject to MOQ)



Environmental Protection

IP65 c/w corrosion-resistant paint finish - 304 stainless steel exposed fixtures



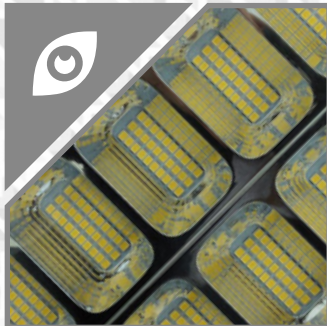
Impact Protection

IK08 rated



Distribution

General purpose asymmetric dispersion pattern suitable for most applications



Low Glare Light Engines

<19UGR - Advanced, low-glare dispersion pattern



Driver Protocols

Non-dimming, 1-10V, DALI



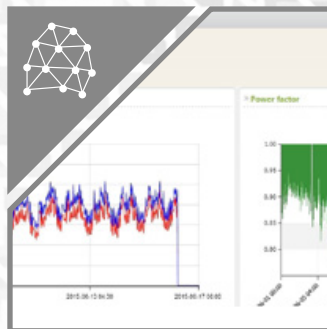
Sensor(s)

Integrated, standalone (single or multiple luminaires per sensor options). Ingress protection of fitting may reduce subject to integrated controls.



Sensor Functions

Occupancy, multi-step dimming, photocell, daylight harvesting



Advanced Controls

System energy reporting, data monitoring, IoT (wireless/wired) networks

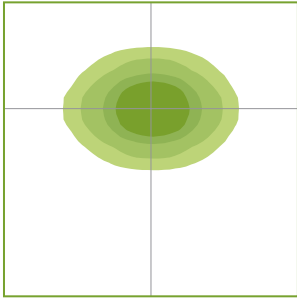


Please note - images shown are intended to be illustrative only. For exact data, please refer to specific product photometry, available for download from our website.

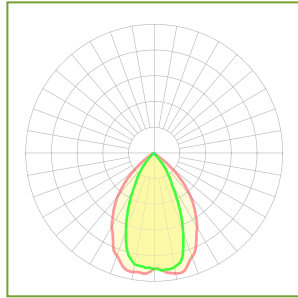
◀ Indicative Product Photometry

A5 - 55° x 75° ▶▶

ISOLUX DIAGRAM

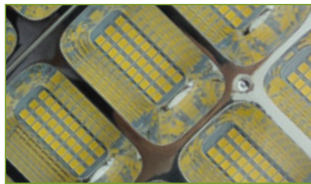


POLAR DIAGRAM



Diffusers ▶▶

This series is available with the following diffusers. Each diffuser will have a varying effect on photometric distribution and intensity. Please refer to downloadable photometrics for exact data.



Clear tempered glass lens (polycarbonate optional) over specialist recessed reflectors.





Standard product code fields are presented as:
Further customisation may be available - please contact us if required



Product Ordering Codes

PRODUCT	POWER	CRI & CCT	OPTIC	DRIVER	MOUNTING	COLOUR	CONFIGURABLE OPTION
HAL	120 120W	830 CRI >80, 3000K	A5 55" X 75"	D1 NON-DIM	TE TWIN EYE BOLTS	BL BLACK (RAL 9011)	PC POLYCARBONATE
	180 180W	840 CRI >80, 4000K		D2 1-10V		UB UNIVERSAL BRACKET	WH WHITE (RAL 9003)
	240 240W	850 CRI >80, 5000K		D3 DALI	P1HB EX-OR L53000 HIGH-BAY PIR SENSOR		
	310 310W	860 CRI >80, 6000K					

P1 SENSORS SHOULD BE SPECIFIED WITH D3 DALI DRIVERS TO ACHIEVE MAXIMUM SENSOR FUNCTIONALITY

GENERAL NOTES:

1. IF MORE THAN ONE MODIFICATION IS REQUIRED, SEPARATE EACH MODIFICATION WITH A HYPHEN AT THE END OF THE PRODUCT CODE
2. PLEASE ENSURE SELECTION OF COMPATIBLE DRIVER FOR OCCUPANCY SENSORS WITH DIMMING FUNCTIONALITY
3. PLEASE NOTE THAT MODIFICATIONS WHICH AFFECT LIGHT OUTPUT HAVE SEPARATE PHOTOMETRIC FILES IDENTIFIED WITH "...+(MODIFICATION)"
4. ALTERNATIVE DRIVERS MAY BE AVAILABLE - PLEASE CONTACT OUR OFFICE FOR FURTHER DETAILS
5. IF PRODUCT IS CUSTOMISED, CODES WILL BE ALTERED AS NECESSARY

Product Ordering Code Examples:

HAL-120-750-A5-D1-EB-BL

HAL-180-850-A5-D3-UB-WH-PC

DRIVER MANUFACTURER			
POWER	D1	D2	D3
120 120W	Mean Well	Mean Well	Inventronics
180 180W	Mean Well	Mean Well	Inventronics
240 240W	Mean Well	Mean Well	Inventronics
310 310W	Mean Well	Mean Well	Inventronics

CONTACT OUR OFFICE FOR FURTHER INFORMATION ON DRIVER PARAMETERS

ACCESSORIES
JB1 IP68 13A IN-LINE CONNECTOR
JB1-(LENGTH IN METRES) IP68 13A IN-LINE CONNECTOR WITH CABLE TO REQUESTED LENGTH
HAL-UB UNIVERSAL BRACKET

