

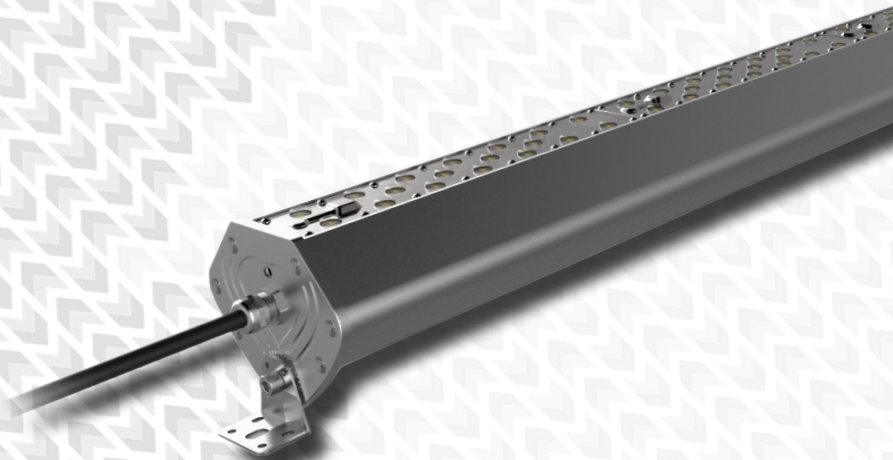


High-output, industrial,  
& commercial, linear fittings  
developed for world-class facilities

>13 optical configurations &  
low-glare diffusers available -  
3 hour emergency option,  
intelligent control methods,  
& varied installation styles

CE international product marks

The most competitive, high-end  
solution for projects worldwide



## *Dunlop 2 Series* *Temperature Resistant Linear Lights*

CDN:SPEC180REV1

# Technical Specifications Summary



## Performance Summary:

Module Power	DUN2A - 30W Modules			DUN2B - 40W Modules			DUN2C - 50W Modules		
Code (Series-Wattage/Size)	DUN2A-90	DUN2A-120	DUN2A-150	DUN2B-120	DUN2B-160	DUN2B-200	DUN2C-150	DUN2C-200	DUN2C-250
Nominal Power	90W	120W	150W	120W	160W	200W	150W	200W	250W
Luminaire Efficacy @ CRI>70, 5000K CCT	147lm/W	149lm/W	150lm/W	142lm/W	135lm/W	133lm/W	127lm/W	124lm/W	124lm/W
Lumen Output @ CRI>70, 5000K CCT	13,230lm	17,880lm	22,500lm	17,040lm	21,600lm	26,600lm	19,050lm	24,800lm	31,000lm
Lumen Maintenance	L90B50 ≥60,000 hours @ Tj 80°C, 25°C Ambient								
Lumen Maintenance (TM21 Calculated)	L80B10 ≥100,000 hours @ Tj 80°C, 25°C Ambient								
Certification	CE								
Product Warranty	5 Years								

## Light Source and Photometric Parameters:

Chip Brand, Model, & Size	Luxeon 5050
Chip Efficacy @ CRI>70, 5000K CCT	167lm/W @ 640mA, Tj 25°C
Light Emission	Direct
CCT	3000K, 4000K, 5000K, 5700K
CRI	≥70, ≥80, ≥90
SDCM	<4
Diffusers	Clear
Symmetric Light Distribution	25°, 40°, 60°, 90°, 120°, 150°
Asymmetric Light Distribution	IESNA Type 2M, 3M, 3L, 4S, 4M,
Optical Accessories	Frosted

## Electrical Parameters<sup>2</sup>:

System Operating Power	90W	120W	150W	120W	160W	200W	150W	200W	250W
Driver Brand	Philips								
Driver Model	Xitanium 929001401680	Xitanium 929001401680	Xitanium 929001401680	Xitanium 929001401680	Xitanium 929001401680	Xitanium 929001401680 929001402280	Xitanium 929001407080	Xitanium 929001407080, 929001473980	Xitanium 929001407280
System Power Factor	≥0.95	≥0.95	≥0.95	≥0.95	≥0.95	≥0.95	≥0.98	≥0.95	≥0.98
Typical Driver Lifetime	100,000 hours						50,000 hours	100,000 hours	
Input Voltage	220-240VAC, 120-277VAC (DALI Driver)								
Input Frequency	50-60Hz								
Qty of Drivers per Light	1			1	2	1	2		
Inrush Current Per Driver @ 230VAC measured at 50% I <sub>peak</sub> (Peak/Duration)	46A/440μs	46A/440μs	46A/440μs	46A/440μs	46A/440μs	46A/440μs 46A/440μs	47A/320μs	47A/320μs 35A/210μs	47A/320μs
Power Factor	>0.95								
THD	<20%								
Insulation Class	I								
Surge Protection/Fusing	10kV/20kV (optional)								

# Technical Specifications Summary

Code (Series-Wattage/Size)	DUN2A-90	DUN2A-120	DUN2A-150	DUN2B-120	DUN2B-160	DUN2B-200	DUN2C-150	DUN2C-200	DUN2C-250
<b>Environmental Parameters:</b>									
IP Rating	IP67								
IK Rating	IK10								
Ambient Usage Tolerance	-40°C to 55°C				-40°C to 50°C				
Ambient Storage Tolerance	-40°C to 55°C				-40°C to 50°C				
Ambient Humidity Tolerance	0% to 90% RH								
<b>Physical/Mechanical Parameters:</b>									
Product Dimensions: LxWxH (mm)	913 x 124 x 116	1187 x 124 x 116	1462 x 124 x 116	913 x 124 x 116	1187 x 124 x 116	1462 x 124 x 116	913 x 124 x 116	1187 x 124 x 116	1462 x 124 x 116
Qty of Modules	3	4	5	3	4	5	3	4	5
Electrical Connection	800mm Cable								
Fixture Weight <sup>3</sup>	3.74kg	5.80kg	6.70kg	3.74kg	5.80kg	6.70kg	3.74kg	5.80kg	6.70kg
Fixture Primary Material(s)	Aluminium Alloy								
Fixture Finish	AzkoNobel Powder Coated (Marine-Grade Optional)								
Lens(es) Materials	UV Stabilised Polycarbonate								
<b>Dimming/Controls Parameters:</b>									
Dimming Options	1-10V, DALI								
Compatible intelligent lighting systems	Wireless Controls and Monitoring								
<b>Options/Accessories:</b>									
Mounting Styles	Twin Surface Mount Brackets, Cable Suspension								
Miscellaneous Accessories	Emergency								
Available Product Colours	Black, Grey, White, Bronze								
<b>Emergency Options Summary:</b>									
Emergency Variant Code	E3R1								
Test Method	Remote-Test								
Style	Integrated - powering one LED module								
Output Power in Emergency Mode	4W								
Emergency Lumen Output @ 5000K CCT	516lm								
Emergency Correction Factor	0.044	0.033	0.026	0.033	0.025	0.020	0.026	0.020	0.016
IP Rating	IP67								
Emergency Switch Brand	BillDa								
Emergency Switch Model	BLD-CM20E-480800-4W								
Battery Chemical Composition	Li-ion								
Battery Capacity	2500mAh								
Battery Output Voltage	25-48VDC								
Output Power Duration	3 hours								
Time to Charge	≥24 hours								
Ambient Product Usage Tolerance	0°C to 40°C								
Ambient Product Storage Tolerance	-0°C to 40°C								

<sup>1</sup> UGR varies with light distribution. For further details contact our office

<sup>2</sup> Electrical Parameter data is for D1 drivers, unless otherwise stated

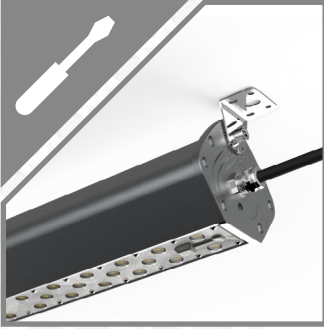
<sup>3</sup> Excludes bracketry. Refer to the Packaging Weights & Dimensions data sheet for bracketry and accessory weights

All stated values should be considered indicative only. Technical data is provided from sample luminaires and construction components as assessed by OEM(s) under industry-standard, laboratory conditions. In practice, stated values can vary. Kellwood Lighting operates a policy of continual product improvement. Our luminaires' capabilities are regularly enhanced to outperform in-class market alternatives. Please contact our technical team directly for clarifications prior to purchase. All images depicted should be considered indicative only. Stated product warranty periods do not include associated labour costs. Stated product warranty periods are for UK projects only. For international projects, please contact our offices directly. Optional upgrades can often affect or supersede unit technical parameters, capabilities, and warranties. It is the responsibility of the purchasing authority to ensure selected hardware is suitable for application. For further documentation, including Returns Policy and Conditions of Unit Failure, please contact our offices. Hazardous area documentation (eg. ATEX) are issued to OEM codes. WEEE compliance reference code: WEE/MP3838PR/SCH. Please do not look directly at LED lighting products during operation.

This datasheet & corresponding certification should be reviewed by a competent person to ensure project suitability.

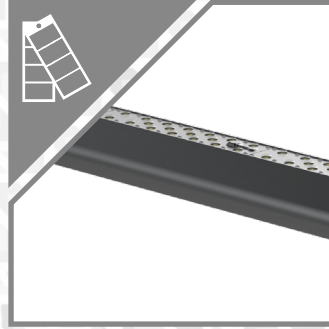
©2020 Kellwood Engineering Ltd. All rights reserved.

## Features Summary



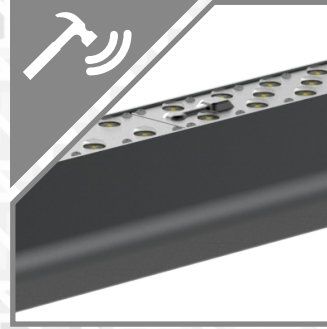
### Mounting Options

Twin surface mount brackets, cable suspension



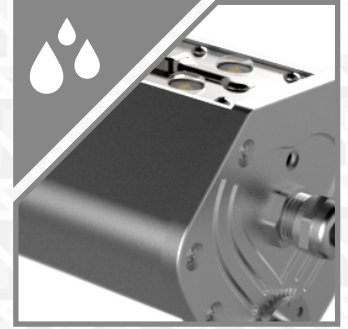
### Optional Fitting Colours

Grey RAL 7004, Black RAL 9011, Bronze RAL 8014, White RAL 9010, Custom availability subject to MOQ



### Impact Resistance

Certified IK10 protection



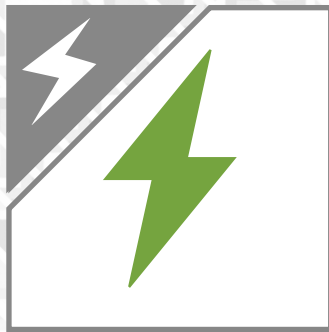
### Environmental Protection

IP67 protection c/w minimum 100µm corrosion-resistant polyester powder coating



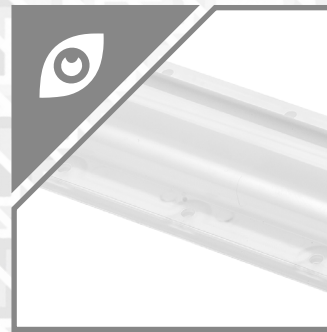
### Distribution

167lm/W family efficacy, double market usage lifespan, >11 optic variations, & assured durability



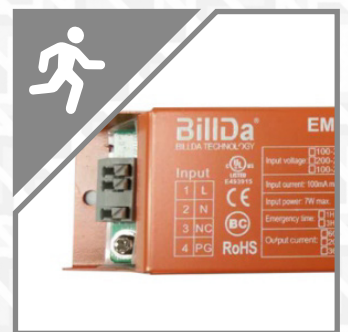
### Surge Protection

10kV and 20kV surge protection are optional.



### Optional Diffusers

Optional frosted diffusers are available to help reduce glare



### Emergency Operation

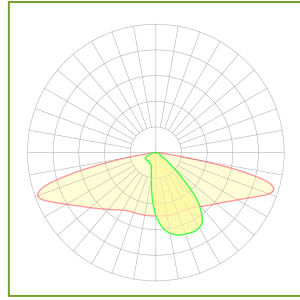
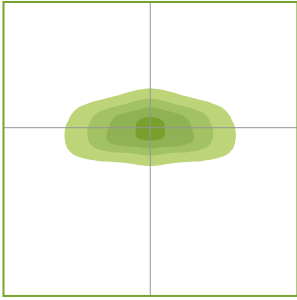
3 hours, maintained, remote testing



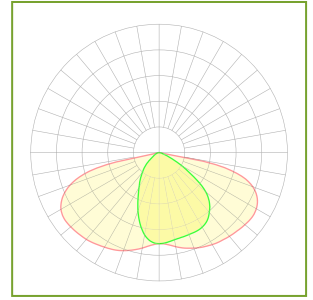
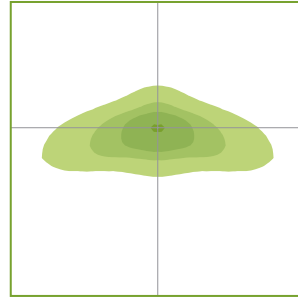
Please note - images shown are intended to be illustrative only. For exact data, please refer to specific product photometry, available for download from our website.

# Indicative Product Photometry

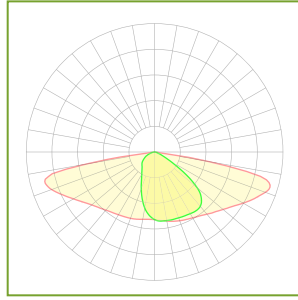
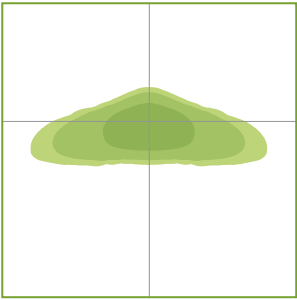
IESNA Type 2 Medium



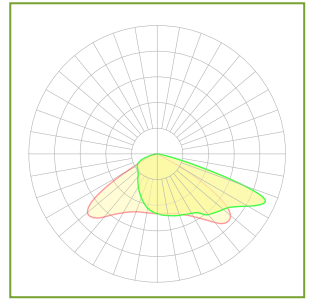
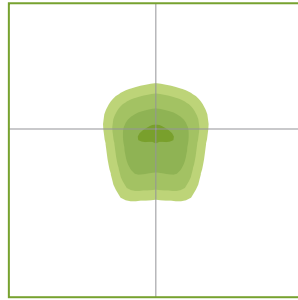
IESNA Type 3 Medium



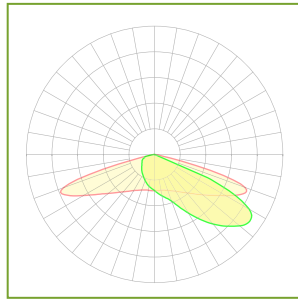
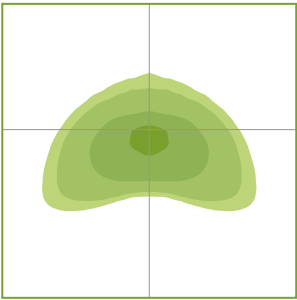
IESNA Type 3 Long



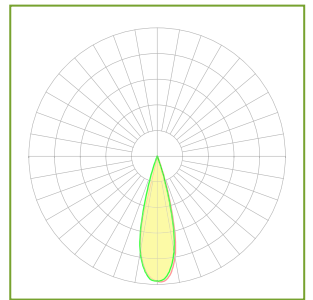
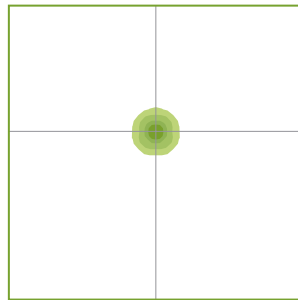
IESNA Type 4 Short



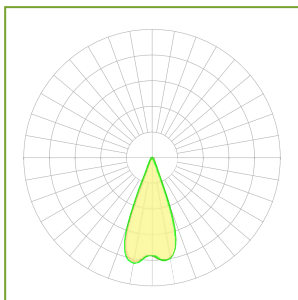
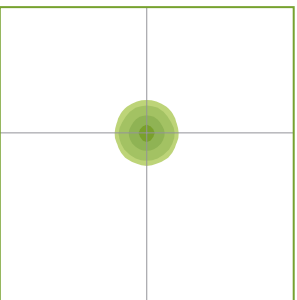
IESNA Type 4 Medium



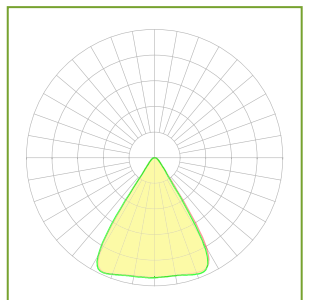
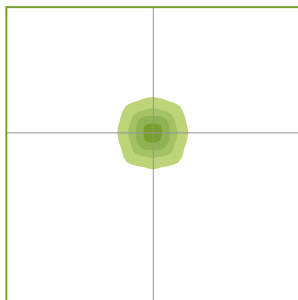
25° Optic



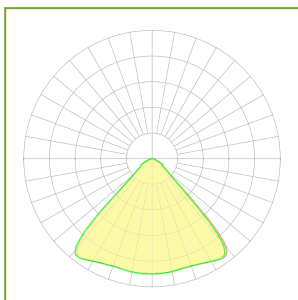
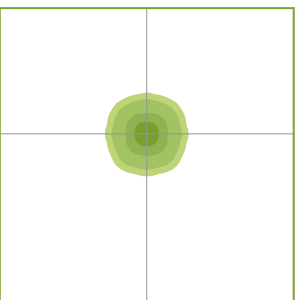
40° Optic



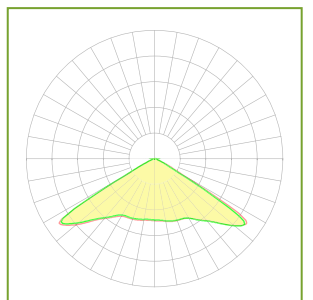
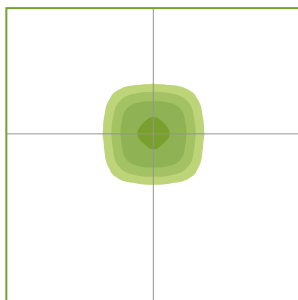
60° Optic



90° Optic



120° Optic



ISOLUX DIAGRAM

POLAR DIAGRAM

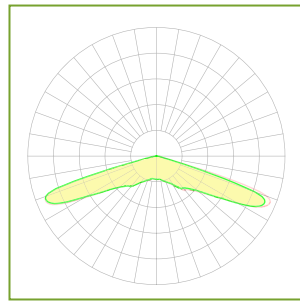
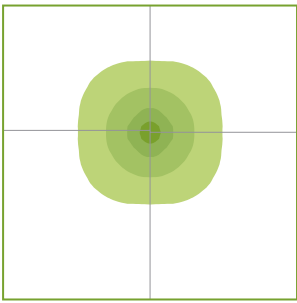
Colourations on isolux diagrams are qualitative, i.e. the same colour on any two isolux diagrams will not necessarily have the same lux value.



Please note - images shown are intended to be illustrative only. For exact data, please refer to specific product photometry, available for download from our website.

## Indicative Product Photometry

### 150° Optic



### Diffusers

This series is available with the following diffusers. Each diffuser will have a varying effect on photometric distribution and intensity. Please refer to downloadable photometrics for exact data.



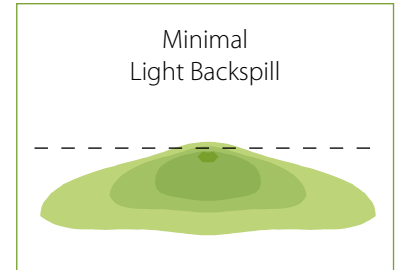
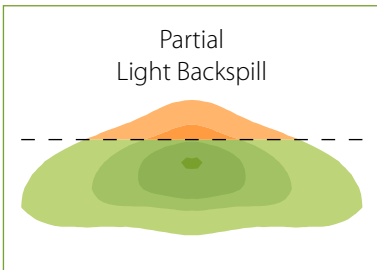
Clear Optic (Various Beam Angles)



Frosted Diffuser

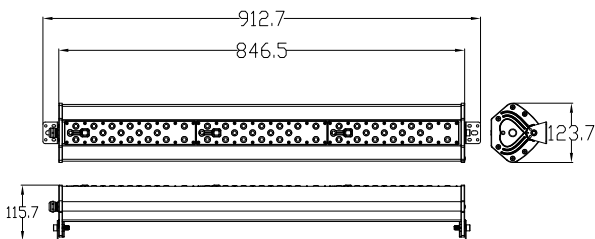
### Backspill Guards

Optional backspill guards are available for the above Type 3 and Type 4 optics. These modify the light distribution to reduce/eliminate backward light trespass. An illustrative example is shown below:

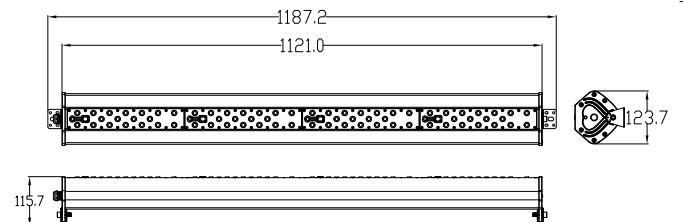


## Technical Drawings

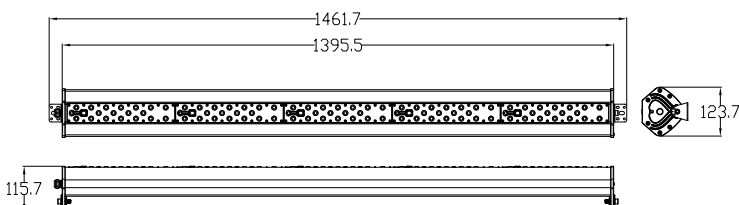
### 3 Modules



### 4 Modules



### 5 Modules



Standard product code fields are presented as:  
Further customisation may be available - please contact us if required



## Product Ordering Codes

PRODUCT & POWER	CRI & CCT	OPTIC	DRIVER	MOUNTING	COLOUR	MODIFICATIONS
<b>DUN2A-90</b>	<b>730</b> CRI >70, 3000K	<b>2M</b> IESNA TYPE II MEDIUM	<b>D1</b> NON-DIM	<b>TM</b> TWIN SURFACE MOUNT BRACKETS	<b>GR</b> GREY	<b>LI</b> LINKABLE VARIANT
<b>DUN2A-120</b>	<b>740</b> CRI >70, 4000K	<b>3M</b> IESNA TYPE III MEDIUM	<b>D2</b> 1-10V	<b>CS</b> CABLE SUSPENSION	<b>BL</b> BLACK	<b>BG</b> BACKSPILL GUARD
<b>DUN2A-150</b>	<b>750</b> CRI >70, 5000K	<b>3L</b> IESNA TYPE III LONG	<b>D3<sup>1</sup></b> DALI		<b>WH</b> WHITE	<b>SP1</b> SURGE PROTECTION DEVICE (10KV)
<b>DUN2B-120</b>	<b>757</b> CRI >70, 5700K	<b>4S</b> IESNA TYPE IV SHORT			<b>GR2<sup>2</sup></b> GREY - MARINE GRADE	<b>SP2</b> SURGE PROTECTION DEVICE (20KV)
<b>DUN2B-160</b>	<b>830</b> CRI >80, 3000K	<b>4M</b> IESNA TYPE IV MEDIUM			<b>BL2<sup>2</sup></b> BLACK - MARINE GRADE	<b>E3R2</b> INTEGRATED 3 HOUR MAINTAINED EMERGENCY (REMOTE TEST) - OUTPUT SW
<b>DUN2B-200</b>	<b>840</b> CRI >80, 4000K	<b>25</b> 25° CIRCULAR			<b>WH2<sup>1</sup></b> WHITE - MARINE GRADE	
<b>DUN2C-150</b>	<b>850</b> CRI >80, 5000K	<b>40</b> 40° CIRCULAR				
<b>DUN2C-200</b>	<b>857</b> CRI >80, 5700K	<b>60</b> 60° CIRCULAR				
<b>DUN2C-250</b>		<b>90</b> 90° CIRCULAR				
		<b>120</b> 120° CIRCULAR				
		<b>150</b> 150° CIRCULAR				
		<b>FR</b> FROSTED DIFFUSER				

Product Ordering Code Examples:

*DUN2A-750-2M-D1-CS-BL*

*DUN2C-850-120-D3-CS-BL-E3R2*

<sup>1</sup> DALI drivers only available with DUN2A & DUN2B models.

<sup>2</sup> Upgraded AkzoNobel polyester powder coat for increased salt corrosion resistance.

DRIVER MANUFACTURER			
PRODUCT POWER	D1	D2	D3
<b>DUN2A-90</b> 90W	<b>Philips</b>	<b>Philips</b>	<b>Philips</b>
<b>DUN2A-120</b> 120W	<b>Philips</b>	<b>Philips</b>	<b>Philips</b>
<b>DUN2A-150</b> 150W	<b>Philips</b>	<b>Philips</b>	<b>Philips</b>
<b>DUN2B-120</b> 120W	<b>Philips</b>	<b>Philips</b>	<b>Philips</b>
<b>DUN2B-160</b> 160W	<b>Philips</b>	<b>Philips</b>	<b>Philips</b>
<b>DUN2B-200</b> 200W	<b>Philips</b>	<b>Philips</b>	<b>Philips</b>
<b>DUN2C-150</b> 150W	<b>Philips</b>	<b>Philips</b>	<b>N/A</b>
<b>DUN2C-200</b> 200W	<b>Philips</b>	<b>Philips</b>	<b>N/A</b>
<b>DUN2C-250</b> 250W	<b>Philips</b>	<b>Philips</b>	<b>N/A</b>

### GENERAL NOTES:

- IF MORE THAN ONE MODIFICATION IS REQUIRED, SEPARATE EACH MODIFICATION WITH A HYPHEN AT THE END OF THE PRODUCT CODE
- PLEASE ENSURE SELECTION OF COMPATIBLE DRIVER FOR OCCUPANCY SENSORS WITH DIMMING FUNCTIONALITY
- PLEASE NOTE THAT MODIFICATIONS WHICH AFFECT LIGHT OUTPUT HAVE SEPARATE PHOTOMETRIC FILES IDENTIFIED WITH "...+(MODIFICATION)"
- ALTERNATIVE DRIVERS MAY BE AVAILABLE - PLEASE CONTACT OUR OFFICE FOR FURTHER DETAILS
- IF PRODUCT IS CUSTOMISED, CODES WILL BE ALTERED AS NECESSARY