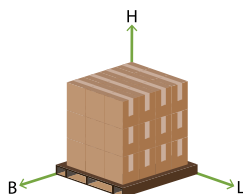
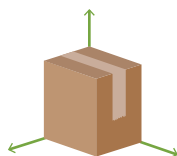
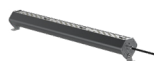


◀ Base Product Packaging & Delivery



| POWER / SIZE (ACCESSORY) | BOX DIMENSIONS GROSS WEIGHT (1 LIGHT / BOX) | PALLET DIMENSIONS LIGHTS / PALLET | NON-STOCKED ITEMS MOQs FOR ECONOMY SHIPPING (OTHERWISE EXPRESS DELIVERY) |
|-----------------------------|---|--|--|
| DUN2A-90 | 94 x 14 x 14 cm 4.5kg | 120L x 100B x 150H cm 80 Lights / Pallet | 16+ (1-15) |
| DUN2A-120 | 121 x 14 x 14 cm 6.14kg | 130L x 100B x 150H cm 70 Lights / Pallet | 16+ (1-15) |
| DUN2A-150 | 151 x 14 x 14 cm 8.2kg | 151L x 100B x 150H cm 70 Lights / Pallet | 10+ (1-9) |
| DUN2B-120 | 94 x 14 x 14 cm 4.5kg | 120L x 100B x 150H cm 80 Lights / Pallet | 16+ (1-15) |
| DUN2B-160 | 121 x 14 x 14 cm 6.14kg | 130L x 100B x 150H cm 70 Lights / Pallet | 16+ (1-15) |
| DUN2B-200 | 151 x 14 x 14 cm 8.2kg | 151L x 100B x 150H cm 70 Lights / Pallet | 10+ (1-9) |
| DUN2C-150 | 94 x 14 x 14 cm 4.5kg | 120L x 100B x 150H cm 80 Lights / Pallet | 16+ (1-15) |
| DUN2C-200 | 121 x 14 x 14 cm 6.14kg | 130L x 100B x 150H cm 70 Lights / Pallet | 16+ (1-15) |
| DUN2C-250 | 151 x 14 x 14 cm 8.2kg | 151L x 100B x 150H cm 70 Lights / Pallet | 10+ (1-9) |

PRODUCT AND PACKAGING WEIGHTS, DIMENSIONS AND MINIMUM ORDER QUANTITIES (MOQs) ARE INDICATIVE AND MAY VARY ACCORDING TO EXACT SPECIFICATION. THE FIGURES ABOVE MAY EXCLUDE BRACKETRY & ACCESSORIES.

MOQs FOR ECONOMY SHIPPING ARE FOR THE DELIVERY ASPECT OF ORDERING ONLY. THERE MAY BE ADDITIONAL MOQs FOR PARTICULAR PRODUCT VARIANTS (CRI/CCT, COLOUR, MODIFICATIONS, ETC). PLEASE CONTACT OUR OFFICE FOR FURTHER DETAILS.

