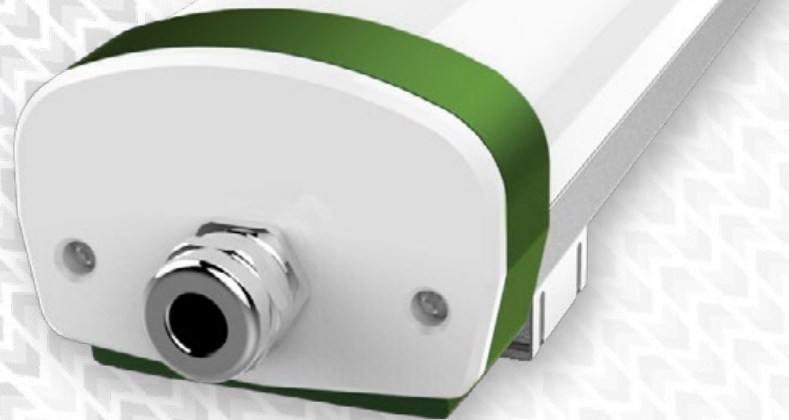




- High output, utility aluminium linear fittings for application in commercial & industrial areas
- Performance driven design - family efficacy of 139 lm/W, IP65 & IK08
- A highly cost effective commercial & industrial solution
- CE & RoHS international product marks
- The most competitive, high-end solution for projects worldwide



Nasmyth Series **Utility Aluminium Linear Fitting**

CDN:SPEC75REV7

Technical Specifications Summary



Performance Summary:

Code (Series-Wattage/Size)	NAS-25B	NAS-36D	NAS-50A	NAS-65A
Nominal Power	25W	36W	50W	65W
Luminaire Efficacy @ CRI>80, 5000K CCT	140lm/W	140lm/W	136lm/W	137lm/W
Lumen Output @ CRI>80, 5000K CCT	3,500lm	5,040lm	6,800lm	8,900lm
Lumen Maintenance (TM21 Reported)	L70B10 ≥78,000 hours @ Ta 25°C			
Lumen Maintenance (TM21 Calculated)	L70B50 ≥91,000 hours @Ta 25°C			
Certification	CE, RoHS			
Product Warranty	5 Years			

Light Source and Photometric Parameters:

Chip Brand, Model, & Size	Jufei San'an 2835
Chip Efficacy @ CRI>80, 5000K CCT	190lm/W @ 60mA, 25°C
Light Emission	Direct
CCT	5000K, (3000K, 4000K, 6000K optional)
CRI	≥80Ra, (≥90Ra optional)
SDCM	<6, (<3 optional)
Diffusers	Frosted, (Clear Striped optional)
Symmetric Light Distribution	120°

Electrical Parameters:

System Operating Power	25W	36W	50W	65W
Driver Brand	Lifud (Osram DALI-dimming Optional)			
Driver Model	LF-GMD023YA	LF-GMD040YA	LF-GMD063YA	LF-GMD063YA
Typical Driver Lifetime	55,000 hours @Tc 60°C			
Input Voltage	100-240VAC			
Input Frequency	50-60Hz			
Qty of Drivers per Light	1			
Power Factor	>0.9			
Inrush Current	I<60A/350µs @ 230VAC (Peak/Duration)			
THD	<20% (100-240VAC)			
Insulation Class	Class I			

Environmental Parameters:

IP Rating	IP65
IK Rating	IK08
Ambient Usage Tolerance	-20°C to 40°C
Ambient Storage Tolerance	-40°C to 80°C
Ambient Humidity Tolerance	10% to 80% RH

Technical Specifications Summary

Code (Series-Wattage/Size)	NAS-25B	NAS-36D	NAS-50A	NAS-65A
Physical/Mechanical Parameters:				
Product Dimensions: LxWxH (mm)	600 x 83 x 55	1200 x 83 x 55	1500 x 83 x 55	1500 x 83 x 55
Electrical Connection	Quick Connect Terminal Block (Both Ends Optional)			
Fixture Weight ²	1.1kg	2.0kg	2.4kg	2.4kg
Fixture Primary Material(s)	Aluminium and Stainless Steel Fixings			
Fixture Finish	Anodised			
Lens(es) Materials	UV Stabilised Polycarbonate			
Dimming/Controls Parameters:				
Dimming Options	1-10V, DALI			
Built-in Controls	Microwave Occupancy Multi-step Dimming and Remote Controllable			
Compatible intelligent lighting systems	Wireless Controls and Monitoring			
Options/Accessories:				
Mounting Styles	Twin Surface/Trunking Brackets, Cable Suspension			
Miscellaneous Accessories	Linkable Variant, IP68 13A In-Line Connector			

¹ Electrical Parameter data is for D1 drivers, unless otherwise stated

² Excludes bracketry. Refer to the Packaging Weights & Dimensions data sheet for bracketry and accessory weights

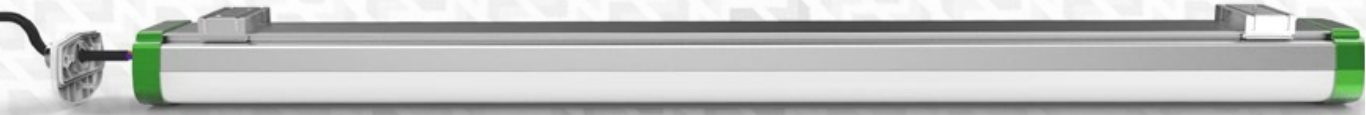
Emergency Options Summary:	
Emergency Variant Code	ELG2-3-NM-S1 (Requires LI "Linkable" Nasmyth Variant)
Test Method	Self-Test
Style	Wire-in module with integrated light source Non-Maintained
Emergency Lumen Output @ 4000K CCT	400lm
IP Rating	IP65
Battery Chemical Composition	LiFePO4
Battery Configuration	Replaceable
Battery Capacity	2,200 mAh
Battery Output Voltage	7.4V 3Ah
Output Power Duration	3 hours
Time to Charge	10 hours
Ambient Product Usage Tolerance	-20°C to 40°C
Ambient Product Storage Tolerance	-20°C to 40°C
Product Dimensions (ØxH)	86 x 57mm
Warranty	2 Years

All stated values should be considered indicative only. Technical data is provided from sample luminaires and construction components as assessed by OEM(s) under industry-standard, laboratory conditions. In practice, stated values can vary. Kellwood Lighting operates a policy of continual product improvement. Our luminaires' capabilities are regularly enhanced to outperform in-class market alternatives. Please contact our technical team directly for clarifications prior to purchase. All images depicted should be considered indicative only. Stated product warranty periods do not include associated labour costs. Stated product warranty periods are for UK projects only. For international projects, please contact our offices directly. Optional upgrades can often affect or supersede unit technical parameters, capabilities, and warranties. It is the responsibility of the purchasing authority to ensure selected hardware is suitable for application. For further documentation, including Returns Policy and Conditions of Unit Failure, please contact our offices. Hazardous area documentation (eg. ATEX) are issued to OEM codes. WEEE compliance reference code: WEE/MP3838PR/SCH. Please do not look directly at LED lighting products during operation.

This datasheet & corresponding certification should be reviewed by a competent person to ensure project suitability.

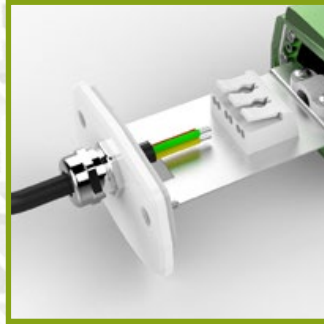
©2020 Kellwood Engineering Ltd. All rights reserved.

◀ Features Summary



Twin Surface Mount Brackets

Stainless Steel c/w tightening bolt - screws & raw plug set included



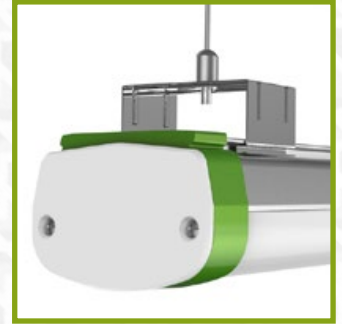
Quick Connectors + IP65

Easy access to terminal blocks ensure fast and flexible installation whilst maintaining IP65 rating



Optional Diffusers

Frosted, clear or striped diffusers are available



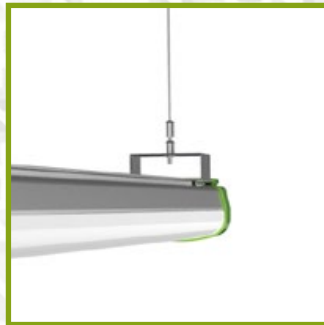
Accent Ring

Custom-colour available - subject to MOQ



Series Mounting Modifications

Dual end terminal blocks. (Max. 12no. fittings per daisy-chain)



Cable Suspension

Twin 1500mm stainless steel suspension cable kits are available



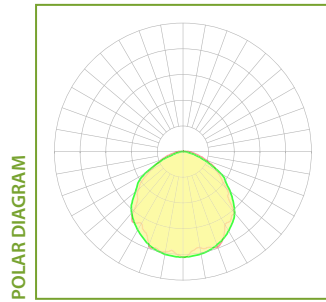
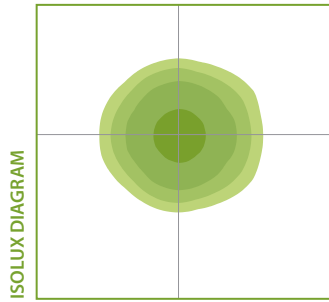
Emergency Operation

Non-Maintained, Self Test - 3 hour integrated, 3 hour module . Remote testing functionality can also be achieved by installing an emergency key switch on the permanent live.

Please note - images shown are intended to be illustrative only. For exact data, please refer to specific product photometry, available for download from our website.

◀ Indicative Product Photometry

120° Optic ▶



Diffusers ▶

This series is available with the following diffusers. Each diffuser will have a varying effect on photometric distribution and intensity. Please refer to downloadable photometrics for exact data.



Frosted Diffuser



Clear Striped Diffuser

Images are illustrative of diffuser type only and not necessarily taken from this product series

Colourations on isolux diagrams are qualitative, i.e. the same colour on any two isolux diagrams will not necessarily have the same lux value.



Standard product code fields are presented as:
Further customisation may be available - please contact us if required



Product Ordering Codes

PRODUCT	POWER	CRI & CCT	OPTIC	DRIVER	MOUNTING	MODIFICATIONS
NAS	25B 25W 600mm	830 CRI >80, 3000K	FR FROSTED DIFFUSER	D1 NON-DIM	TT TWIN SURFACE/TRUNKING BRACKETS	LI LINKABLE VARIANT
	36D 36W 1200mm	840 CRI >80, 4000K	CL CLEAR STRIPED DIFFUSER	D2 1-10V	CS CABLE SUSPENSION	
	50A 50W 1500mm	850 CRI >80, 5000K		D3 DALI		
	65A 65W 1500mm	860 CRI >80, 6000K				
		930 CRI >90, 3000K				
		940 CRI >90, 4000K				
		950 CRI >90, 5000K				
	960 CRI >90, 6000K					

¹ Remote testing functionality can also be achieved by installing an emergency key switch on the permanent live.

GENERAL NOTES:

- IF MORE THAN ONE MODIFICATION IS REQUIRED, SEPARATE EACH MODIFICATION WITH A HYPHEN AT THE END OF THE PRODUCT CODE
- PLEASE ENSURE SELECTION OF COMPATIBLE DRIVER FOR OCCUPANCY SENSORS WITH DIMMING FUNCTIONALITY
- PLEASE NOTE THAT MODIFICATIONS WHICH AFFECT LIGHT OUTPUT HAVE SEPARATE PHOTOMETRIC FILES IDENTIFIED WITH "...+(MODIFICATION)"
- ALTERNATIVE DRIVERS MAY BE AVAILABLE - PLEASE CONTACT OUR OFFICE FOR FURTHER DETAILS
- IF PRODUCT IS CUSTOMISED, CODES WILL BE ALTERED AS NECESSARY

Product Ordering Code Examples:

NAS-25A-850-FR-D1-TT

NAS-40A-850-CL-D3-CS-LI

DRIVER MANUFACTURER			
POWER	D1	D2	D3
25A 25W 1500mm	Lifud	Lifud	Osram
36A 36W 1500mm	Lifud	Lifud	Osram
50A 50W 1500mm	Lifud	Lifud	Osram
65A 65W 1500mm	Lifud	Lifud	Osram

CONTACT OUR OFFICE FOR FURTHER INFORMATION ON DRIVER PARAMETERS

ACCESSORIES
ELG2-3-NM-S1¹ ELGIN 2 SERIES - PLUG IN 3W NON-MAINTAINED, SELF TEST MINI EMERGENCY MODULE
JB1 IP68 13A IN-LINE CONNECTOR
JB1-(LENGTH IN METRES) IP68 13A IN-LINE CONNECTOR WITH CABLE TO REQUESTED LENGTH

