



Advanced, corrosion-resistant, food-grade, linear light fittings - Developed for application throughout hygienic factories & warehouses, food preparation & production areas, laboratories, clean rooms, & the wider service industry

20W-48W series power range -
2ft, 4ft & 5ft - Impact, ingress, & corrosion, resistant chassis -
>140lm/W family efficacy - Wide dispersion, general-purpose optics c/w commercial-grade colour rendering capabilities - Minimised moisture build-up design

CE & RoHS
Ammonia Resistant - DLG Approved
Tested @ 750ppm Ammonia Concentration



Cameron 2 Series *Clean Area Linear Luminaires*

CDN:SPEC112REV5

Technical Specifications Summary



Performance Summary:

Code (Series-Wattage/Size)	CAM2-20B	CAM2-36D	CAM2-48A
Nominal Power	20W	36W	48W
Luminaire Efficacy @ CRI>80, 4000K CCT	142lm/W	144lm/W	139lm/W
Lumen Output @ CRI>80, 4000K CCT	2,531lm	5,184lm	6,672lm
Lumen Maintenance (TM21 Reported)	L80B10 ≥55,000 hours @ 25°C		
Lumen Maintenance (TM21 Calculated)	L70B50 ≥86,000 hours @ 25°C		
Certification	CE, RoHS		
Product Warranty	5 Years		

Light Source and Photometric Parameters:

Chip Brand, Model, & Size	Jufei San'an 2835		
Chip Efficacy @ CRI>80, 5000K CCT	190lm/w @ 60mA, 25°C		
Light Emission	Direct		
CCT	5000K, (3000K, 4000K optional)		
CRI	≥80Ra, (≥90Ra optional)		
SDCM	<6, (<3 optional)		
Diffusers	Frosted (Polycarbonate or PMMA Diffuser)		
Symmetric Light Distribution	120°		
Typical UGR	<24	<22	<21

Electrical Parameters:

System Operating Power	20W	36W	48A
Driver Brand	Lifud		
Driver Model	LF-GMD023YA	LF-GMD040YA	LF-GMD063YA
Input Voltage	220-240VAC		
Input Frequency	50-60Hz		
Qty of Drivers per Light	1		
Inrush Current	I<60A/350μs @ 230VAC (Peak/Duration)		
Max Qty Wired in Series	35	19	14
Power Factor	>0.9		
THD	<20% (220-240VAC)		
Insulation Class	Class I		

Environmental Parameters:

IP Rating	IP69K		
IK Rating ²	IK10 (PC) / IK08 (PMMA) / IK06 (TG)		
Ambient Usage Tolerance	-20°C to 40°C		
Ambient Storage Tolerance	-40°C to 85°C		
Ambient Humidity Tolerance	10% to 80% RH		

Technical Specifications Summary

Code (Series-Wattage/Size)	CAM2-20B	CAM-36D	CAM-48A
Physical/Mechanical Parameters:			
Product Dimensions: Lx0 (mm)	600 x 70	1200 x 70	1500 x 70
Electrical Connection	1000mm 3-Core Cable		
Fixture Weight²	1.0kg	1.7kg	2.0kg
Fixture Primary Material(s)	Polycarbonate or PMMA external housing with internal aluminium alloy structure and 316 stainless steel fixings and end caps		
Lens(es) Materials	UV Stabilised Polycarbonate, PMMA, Tempered Glass		
Fire-rating	V0 Fire-Rated (Polycarbonate Housing)		
Dimming/Controls Parameters:			
Dimming Options	1-10V, DALI		
Compatible intelligent lighting systems	Wireless Controls and Monitoring		
Options/Accessories:			
Mounting Styles	Cable Suspension, Twin Surface Mount Brackets		
Miscellaneous Accessories	3M IP68 Cable Extension, Stainless Steel Gland, Linkable Variant		

¹ Electrical Parameter data is for D1 drivers, unless otherwise stated

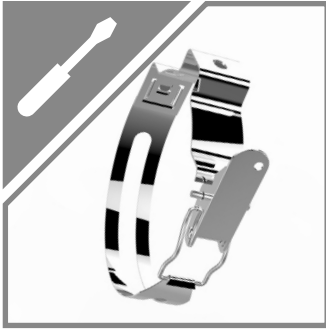
² Excludes bracketry. Refer to the Packaging Weights & Dimensions data sheet for bracketry and accessory weights

All stated values should be considered indicative only. Technical data is provided from sample luminaires and construction components as assessed by OEM(s) under industry-standard, laboratory conditions. In practice, stated values can vary. Kellwood Lighting operates a policy of continual product improvement. Our luminaires' capabilities are regularly enhanced to outperform in-class market alternatives. Please contact our technical team directly for clarifications prior to purchase. All images depicted should be considered indicative only. Stated product warranty periods do not include associated labour costs. Stated product warranty periods are for UK projects only. For international projects, please contact our offices directly. Optional upgrades can often affect or supersede unit technical parameters, capabilities, and warranties. It is the responsibility of the purchasing authority to ensure selected hardware is suitable for application. For further documentation, including Returns Policy and Conditions of Unit Failure, please contact our offices. Hazardous area documentation (eg. ATEX) are issued to OEM codes. WEEE compliance reference code: WEE/MP3838PR/SCH. Please do not look directly at LED lighting products during operation.

This datasheet & corresponding certification should be reviewed by a competent person to ensure project suitability.

©2020 Kellwood Engineering Ltd. All rights reserved.

◀ Features Summary



Mounting Options

Surface mount brackets, cable suspension - Mounting systems constructed from 316 stainless steel



Dust Resistance

Hydrophobic & seamless cylindrical design prevents dirt & dust build up



Environmental Protection

IP69K rated, 316 stainless steel exposed fixtures



Impact Protection

IK10 rated (Polycarbonate Diffuser), IK08 rated (PMMA Diffuser)



Cable Entry

Wire-in quick connector, Stainless steel gland with 3m cable



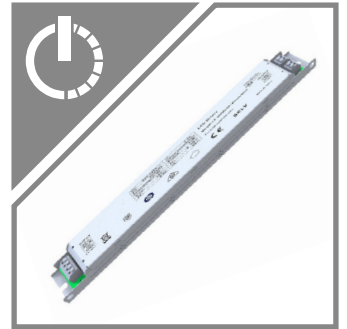
Application

Parallel, Series installation (daisy-chain max load 1200W)



Distribution

General purpose symmetrical dispersion pattern suitable for most applications



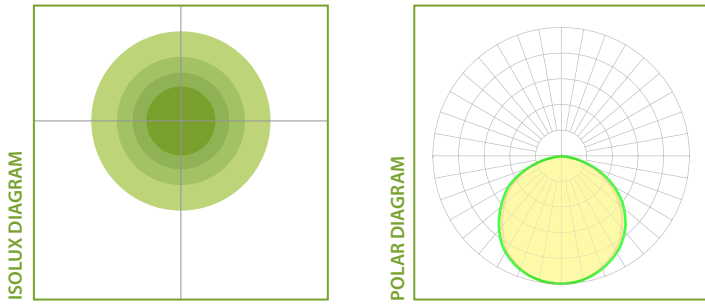
Driver Protocols

Non-dimming, 1-10V, DALI

Please note - images shown are intended to be illustrative only. For exact data, please refer to specific product photometry, available for download from our website.

Indicative Product Photometry

120° Optic



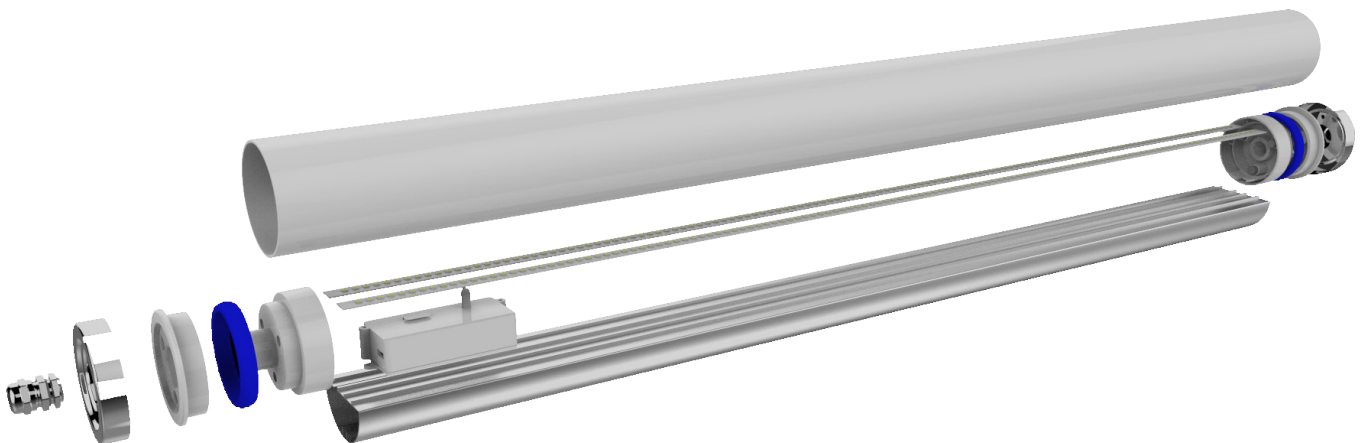
Diffusers

This series is available with the following diffusers. Each diffuser will have a varying effect on photometric distribution and intensity. Please refer to downloadable photometrics for exact data.



Frosted Diffuser

Exploded View





Standard product code fields are presented as:
Further customisation may be available - please contact us if required



Product Ordering Codes

PRODUCT	POWER	CRI & CCT	OPTIC	DRIVER	MOUNTING	MATERIAL	CONFIGURABLE OPTIONS
CAM2	20B 20W 600mm	830 CRI >80, 3000K	FR FROSTED DIFFUSER	D1 NON-DIM	CS CABLE SUSPENSION	PC POLYCARBONATE DIFFUSER	LI LINKABLE VARIANT
	36D 36W 1200mm	840 CRI >80, 4000K		D2 1-10V		TM TWIN SURFACE MOUNT BRACKETS	
	48A 48W 1500mm	850 CRI >80, 5000K		D3 DALI	TG TEMPERED GLASS DIFFUSER		SG3 STAINLESS STEEL GLAND C/W 3M CABLE
		930 CRI >90, 3000K					
		940 CRI >90, 4000K					
		950 CRI >90, 5000K					
		CRI>95 available contact us if required					

Product Ordering Code Examples:

CAM2-20B-850-FR-D1-TM-PC-LI

CAM2-48A-940-CL-D3-CS-PM

GENERAL NOTES:

- IF MORE THAN ONE MODIFICATION IS REQUIRED, SEPARATE EACH MODIFICATION WITH A HYPHEN AT THE END OF THE PRODUCT CODE
- PLEASE ENSURE SELECTION OF COMPATIBLE DRIVER FOR OCCUPANCY SENSORS WITH DIMMING FUNCTIONALITY
- PLEASE NOTE THAT MODIFICATIONS WHICH AFFECT LIGHT OUTPUT HAVE SEPARATE PHOTOMETRIC FILES IDENTIFIED WITH "...+(MODIFICATION)"
- ALTERNATIVE DRIVERS MAY BE AVAILABLE - PLEASE CONTACT OUR OFFICE FOR FURTHER DETAILS
- IF PRODUCT IS CUSTOMISED, CODES WILL BE ALTERED AS NECESSARY

DRIVER MANUFACTURER			
POWER	D1	D2	D3
20B 20W 600mm	Lifud	Lifud	Lifud
36D 36W 1200mm	Lifud	Lifud	Lifud
48A 48W 1500mm	Lifud	Lifud	Lifud

ACCESSORIES
3C 3M CABLE EXTENSION VIA IP68 BARREL CONNECTOR

CONTACT OUR OFFICE FOR FURTHER INFORMATION ON DRIVER PARAMETERS

