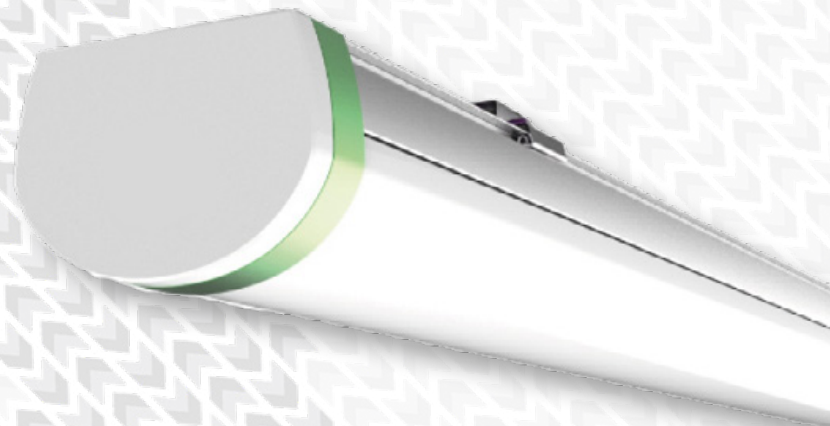




Multi-functional, high-output, industrial & commercial linear luminaires - Specifically developed for largescale projects throughout premium production complexes, manufacturing lines, & logistics areas

90W product power class - Suitable for suspension, surface mount, & trunking applications - Rear & end-gland, cable entry options - >130lm/W family efficacy - Wide dispersion, general-purpose optics c/w advanced colour rendering capabilities - Retail-grade colour rendering available - Superior glare-control through recessed light engine & frosted diffusers - Optional integrated, 3 hour emergency modification c/w integrated instant-test button - Standalone & wireless network, intelligent control options available

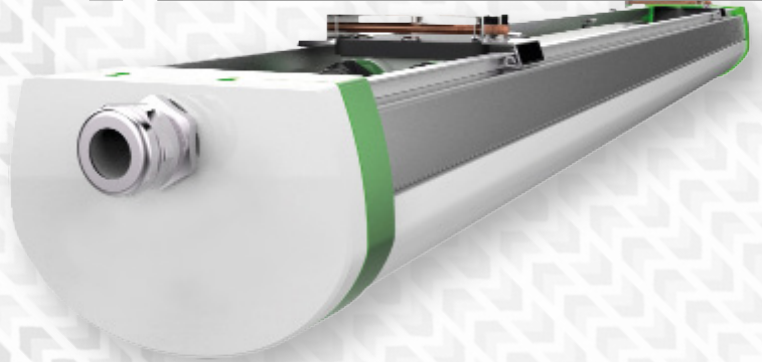
CE & RoHS  
international product marks



## *Bowden 3 Series* *High-Output Linear Luminaires*

CDN:SPEC93REV3

## Technical Specifications Summary



### Industrial Range / Vapour Proof / Bowden 3 Series

<b>Nominal Power/Product Class</b>	90W
<b>Nominal Efficacy @ 5000K</b>	130lm/W
<b>Nominal Output @ 5000K</b>	11,700lm
<b>Light Engine &amp; Model</b>	Samsung 2835
<b>Lumen Maintenance (TM21)</b>	L70 ≥50,000 hours
<b>LM79 Test Conditions (Abrid.)</b>	/
<b>CCT</b>	3000K, 4000K, <u>5000K</u>
<b>CRI</b>	≥80Ra, ≥90Ra
<b>Typical UGR</b>	<24
<b>Lens(es)</b>	<u>Frosted, Striped</u>
<b>Symmetric Distribution</b>	120°
<b>Asymmetric Distribution</b>	N/A
<b>Ingress Rating (Front/Back)</b>	<u>IP44/IP20</u> , IP54
<b>Impact Resistance</b>	IK08
<b>Ambient Usage Tolerance</b>	-20°C to 40°C
<b>Ambient Storage Tolerance</b>	-40°C to 85°C
<b>Ambient Humidity Tolerance</b>	10% to 80%RH
<b>PSU Manufacturer</b>	Mean Well
<b>PSU Advanced Data</b>	Contact Office
<b>Input Voltage</b>	100-277VAC
<b>Input Frequency</b>	50-60Hz
<b>Power Factor</b>	≥0.93
<b>THD</b>	<20
<b>Product Dimensions (LxWxH)</b>	1500 x 85 x 109mm
<b>Cable Dimensions (L)</b>	IP65 Terminal Block
<b>Fixture Weight</b>	3.3kg
<b>Fixture Primary Material(s)</b>	Aluminium Alloy
<b>Fixture Finish</b>	Anodised
<b>Lens(es) Materials</b>	Polycarbonate
<b>Product Warranty</b>	5 Years

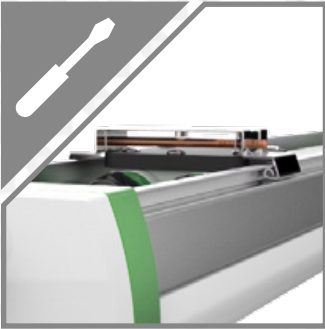
Underline (all pages) = supplied as standard

All stated values should be considered indicative only. Technical data is provided from sample luminaires and construction components as assessed by OEM(s) under industry-standard, laboratory conditions. In practice, stated values can vary. Kellwood LED Lighting operates a policy of continual product improvement. Our luminaires' capabilities are regularly enhanced to outperform in-class market alternatives. Please contact our technical team directly for clarifications prior to purchase. All images depicted should be considered indicative only. Stated product warranty periods do not include associated labour costs. Stated product warranty periods are for UK projects only. For international projects, please contact our offices directly. Optional upgrades can often affect or supersede unit technical parameters, capabilities, and warranties. It is the responsibility of the purchasing authority to ensure selected hardware is suitable for application. For further documentation, including Returns Policy and Conditions of Unit Failure, please contact our offices. Hazardous area documentation and product nameplates (eg. ATEX) are issued to OEM codes. WEEE compliance reference code: WEE/MP3838PR/SCH. Please do not look directly at LED lighting products during operation.

This datasheet & corresponding certification should be reviewed by a competent person to ensure project suitability.

©2017 Kellwood Engineering Ltd. All rights reserved.

# Features Summary



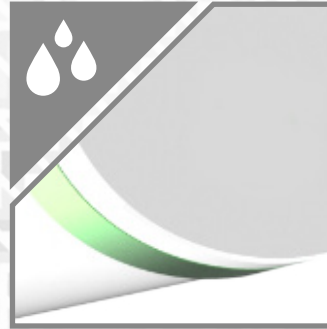
### Mounting Options

Surface mount brackets (20mm central hole), cable suspension - 304 stainless steel materials c/w locking bolt



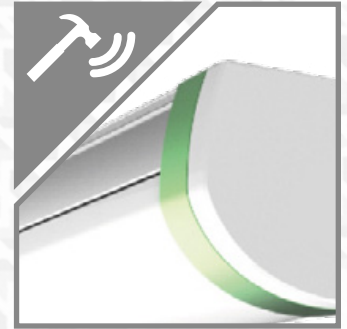
### Accent Colouration

Green, custom (subject to MOQ)



### Environmental Protection

IP44 (front) & IP20 (back), IP54



### Impact Protection

IK08 rated



### Vertical Glare Reduction

Frosted, striped - Reduced glare polycarbonate diffusers



### User-Friendly

End cable entry & rear cable entry capable



### Driver Protocols

Non-dimming, 0-10V, 1-10V, DALI



### Emergency Operation

Maintained - 3 hour integrated, 3 hour module



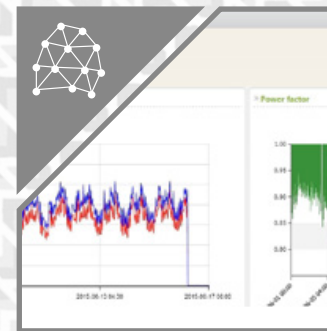
### Sensor(s)

Standalone (single or multiple luminaires per sensor options)



### Sensor Functions

Occupancy, multi-step dimming, photocell, daylight harvesting



### Advanced Controls

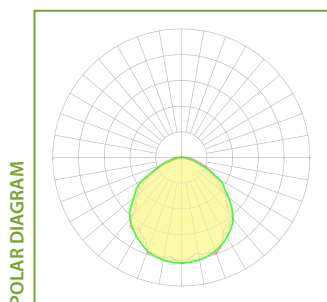
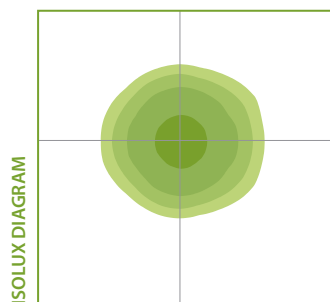
System energy reports, data monitoring, IoT (wireless/wired/mesh) networks



Please note - images shown are intended to be illustrative only. For exact data, please refer to specific product photometry, available for download from our website.

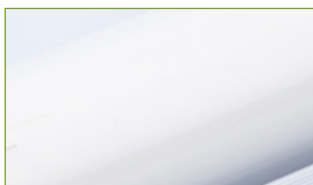
## ◀ Indicative Product Photometry

### 120° Optic ▶▶

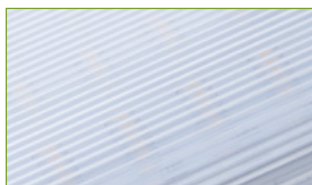


### Diffusers ▶▶

This series is available with the following diffusers. Each diffuser will have a varying effect on photometric distribution and intensity. Please refer to downloadable photometrics for exact data.



Frosted Diffuser



Clear Striped Diffuser

Images are illustrative of diffuser type only and not necessarily taken from this product series

Colourations on isolux diagrams are qualitative, i.e. the same colour on any two isolux diagrams will not necessarily have the same lux value.





Standard product code fields are presented as:  
Further customisation may be available - please contact us if required



## Product Ordering Codes

PRODUCT	POWER	CRI & CCT	OPTIC	DRIVER	MOUNTING	MODIFICATIONS
<b>BO3</b>	<b>90</b> 90W	<b>830</b> CRI >80, 3000K	<b>FR</b> FROSTED DIFFUSER	<b>D1</b> NON-DIM	<b>TT</b> TWIN SURFACE/TRUNKING BRACKETS	<b>LI</b> LINKABLE VARIANT
		<b>840</b> CRI >80, 4000K	<b>ST</b> STRIPED DIFFUSER	<b>D2</b> 1-10V	<b>CS</b> CABLE SUSPENSION	
		<b>850</b> CRI >80, 5000K		<b>D3</b> DALI	<b>AB</b> TWIN ADJUSTABLE ANGLE BRACKETS	
		<b>860</b> CRI >80, 6000K				
		<b>930</b> CRI >90, 3000K				
		<b>940</b> CRI >90, 4000K				
		<b>950</b> CRI >90, 5000K				
		<b>960</b> CRI >90, 6000K				

Product Ordering Code Examples:

*BO3-90-840-FR-D1-TT*

*BO3-90-840-ST-D3-CS-E3R1-LI*

### GENERAL NOTES:

- IF MORE THAN ONE MODIFICATION IS REQUIRED, SEPARATE EACH MODIFICATION WITH A HYPHEN AT THE END OF THE PRODUCT CODE
- PLEASE ENSURE SELECTION OF COMPATIBLE DRIVER FOR OCCUPANCY SENSORS WITH DIMMING FUNCTIONALITY
- PLEASE NOTE THAT MODIFICATIONS WHICH AFFECT LIGHT OUTPUT HAVE SEPARATE PHOTOMETRIC FILES IDENTIFIED WITH "...+(MODIFICATION)"
- ALTERNATIVE DRIVERS MAY BE AVAILABLE - PLEASE CONTACT OUR OFFICE FOR FURTHER DETAILS
- IF PRODUCT IS CUSTOMISED, CODES WILL BE ALTERED AS NECESSARY

DRIVER MANUFACTURER			
POWER	D1	D2	D3
<b>90</b> 90W	<b>Mean Well</b>	<b>Mean Well</b>	<b>Inventronics</b>

CONTACT OUR OFFICE FOR FURTHER INFORMATION ON DRIVER PARAMETERS

ACCESSORIES
<b>3C</b> 3M CABLE EXTENSION VIA IP68 BARREL CONNECTOR
<b>ELG-4-NM</b> ELGIN SERIES - PLUG IN 4W NON-MAINTAINED MINI EMERGENCY MODULE

