

Specialist sports  
lighting hardware for  
application on external  
sports pitches, pavilions  
and stadiums.

400W-1800W series range –  
Lightweight, long-lifetime,  
narrow optics for zone specific  
illumination, sophisticated  
dual tilt technology

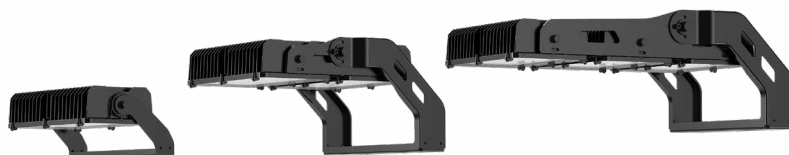
CE, RoHS, ENEC  
international product marks



## *Nicholson 2 Series* *Low Weight Sports Flood Light*

CDN:SPEC223REV1

## Technical Specifications Summary



### Performance Summary:

Code (Series-Wattage/Size)	NIC2-400	NIC2-480	NIC2-600	NIC2-800	NIC2-960	NIC2-1200	NIC2-1500	NIC2-1800
Nominal Power	400W	480W	600W	800W	960W	1200W	1500W	1800W
Luminaire Efficacy @ CRI>70, 5000K CCT, 5050 chip	150lm/W							
Lumen Output @ CRI>70, 5000K CCT, 5050 chip	60,000lm	72,000lm	90,000lm	120,000lm	144,000lm	180,000lm	225,000lm	270,000lm
Product Lumen Maintenance (5050 Chip)	L80B50 ≥118,000 hours @ Ta 25°C							
Certification	CE, RoHS, ENEC							
Product Warranty	5 Years							

### Light Source and Photometric Parameters:

Chip Brand, Model, & Size	Samsung LED 5050, Osram LED 3737							
Light Emission	Direct							
CCT	5700K, (3000K, 4000K optional)							
CRI	≥70, (≥80, ≥90 optional)							
Diffusers	Clear							
Symmetric Light Distribution <sup>1</sup>	23°, 30°, 45°, 60°							
Asymmetric Light Distribution <sup>1</sup>	F1 (40° x 86°), F2 (14° x 106°), F3 (25° x 118°)							
Optical Accessories	Glare Shield							

### Electrical Parameters<sup>2</sup>:

System Operating Power	400W	480W	600W	800W	960W	1200W	1500W	1800W
Driver Brand	Done, Inventronics, US							
System Power Factor	>0.97							
Input Voltage	120-240VAC		200-420VAC					
Input Frequency	50-60Hz							
Surge Protection/Fusing	10KV line-line, 20kv line-earth							

### Environmental Parameters:

IP Rating	IP66							
IK Rating	IK08							
Ambient Usage Tolerance	-30°C to 50°C							
Ambient Storage Tolerance	-30°C to 50°C							

### Physical/Mechanical Parameters:

Product Dimensions: LxWxH (mm)	479 x 250 x 185	479 x 266 x 185	479 x 283 x 185	510 x 429 x 232	510 x 527 x 298	510 x 560 x 298	515 x 777 x 310	515 x 833 x 310
Qty of Modules	1			2			3	3
EPA	0.09m <sup>2</sup>	0.11m <sup>2</sup>	0.12m <sup>2</sup>	0.18m <sup>2</sup>	0.22m <sup>2</sup>	0.24m <sup>2</sup>	0.33m <sup>2</sup>	0.36m <sup>2</sup>
Electrical Connection	Terminal Block							
Fixture Weight <sup>3</sup>	9.9kg	11.2kg	12.5kg	19.1kg	23.0kg	25.4kg	30.8kg	34kg
Fixture Primary Material(s)	Aluminium Alloy							
Fixture Finish	Powder Coating							
Lens(es) Materials	UV Stabilised Glass and Polycarbonate							

## Technical Specifications Summary

Code (Series-Wattage/Size)	NIC2-400	NIC2-480	NIC2-600	NIC2-800	NIC2-960	NIC2-1200	NIC2-1500	NIC2-1800
Dimming/Controls Parameters:								
Dimming Options	DALI							
Compatible intelligent lighting systems	Wireless Controls and Monitoring							
Options/Accessories:								
Mounting Styles	Universal Bracket							
Available Product Colours	Black (RAL9017)							

<sup>1</sup> 23°, F2, F3 optics only available with Osram 3737 chip, please refer to Nicholson 3 Data Sheet

<sup>2</sup> Electrical Parameter data is for D1 drivers, unless otherwise stated

<sup>3</sup> Excludes bracketry. Refer to the Packaging Weights & Dimensions data sheet for bracketry and accessory weights

All stated values should be considered indicative only. Technical data is provided from sample luminaires and construction components as assessed by OEM(s) under industry-standard, laboratory conditions. In practice, stated values can vary. Kellwood Lighting operates a policy of continual product improvement. Our luminaires' capabilities are regularly enhanced to outperform in-class market alternatives. Please contact our technical team directly for clarifications prior to purchase. All images depicted should be considered indicative only. Stated product warranty periods do not include associated labour costs. Stated product warranty periods are for UK projects only. For international projects, please contact our offices directly. Optional upgrades can often affect or supersede unit technical parameters, capabilities, and warranties. It is the responsibility of the purchasing authority to ensure selected hardware is suitable for application. For further documentation, including Returns Policy and Conditions of Unit Failure, please contact our offices. Hazardous area documentation (eg. ATEX) are issued to OEM codes. WEEE compliance reference code: WEE/MP3838PR/SCH. Please do not look directly at LED lighting products during operation.

This datasheet & corresponding certification should be reviewed by a competent person to ensure project suitability.

©2020 Kellwood Engineering Ltd. All rights reserved.





Standard product code fields are presented as:  
Further customisation may be available - please contact us if required



## Product Ordering Codes

PRODUCT	POWER	CRI & CCT	OPTIC	DRIVER	MOUNTING	COLOUR	MODIFICATION	DRIVER MODIFICATIONS
NIC2	<b>400</b> 400W	<b>730</b> CRI >70, 3000K	<b>23<sup>1</sup></b> 23° CIRCULAR	<b>D1</b> NON-DIM	<b>UB</b> UNIVERSAL BRACKET	<b>BL</b> BLACK	<b>GS</b> GLARE SHIELD	<b>"BLANK"</b> DRIVERS MOUNTED ON FITTING
	<b>480</b> 480W	<b>740</b> CRI >70, 4000K	<b>30</b> 30° CIRCULAR	<b>D3</b> DALI				<b>DA</b> REMOTE DRIVER ASSEMBLY (FOR HOUSING IN ON-SITE CONTAINMENT)
	<b>600</b> 600W	<b>757</b> CRI >70, 5700K	<b>45</b> 45° CIRCULAR					<b>DE</b> SECURE REMOTE DRIVER IP67 ENCLOSURE
	<b>800</b> 800W	<b>830</b> CRI >80, 3000K	<b>60</b> 60° CIRCULAR					
	<b>960</b> 960W	<b>840</b> CRI >80, 4000K	<b>F1</b> 40° x 86° FLOODLIGHT					
	<b>1200</b> 1200W	<b>857</b> CRI >80, 5700K	<b>F2<sup>1</sup></b> 14° x 106° FLOODLIGHT					
	<b>1500</b> 1500W		<b>F3<sup>1</sup></b> 25° x 118° FLOODLIGHT					
	<b>1800</b> 1800W							

<sup>1</sup> Optics only available with 3737 chip, please refer to Nicholson 3 Series.

### GENERAL NOTES:

1. IF MORE THAN ONE MODIFICATION IS REQUIRED, SEPARATE EACH MODIFICATION WITH A HYPHEN AT THE END OF THE PRODUCT CODE
2. PLEASE ENSURE SELECTION OF COMPATIBLE DRIVER FOR OCCUPANCY SENSORS WITH DIMMING FUNCTIONALITY
3. PLEASE NOTE THAT MODIFICATIONS WHICH AFFECT LIGHT OUTPUT HAVE SEPARATE PHOTOMETRIC FILES IDENTIFIED WITH "...\*(MODIFICATION)"
4. ALTERNATIVE DRIVERS MAY BE AVAILABLE - PLEASE CONTACT OUR OFFICE FOR FURTHER DETAILS
5. IF PRODUCT IS CUSTOMISED, CODES WILL BE ALTERED AS NECESSARY

### Product Ordering Code Examples:

NIC2-800-857-60-D1-UB-BL

NIC2-1000-740-F1-D3-UB-BL-GS-DA

DRIVER MANUFACTURER		
POWER	D1	D3
<b>400</b> 400W	<b>Done</b>	<b>Done</b>
<b>480</b> 480W	<b>Done</b>	<b>Done</b>
<b>600</b> 600W	<b>Done</b>	<b>US</b>
<b>800</b> 800W	<b>Done</b>	<b>US</b>
<b>960</b> 960W	<b>Done</b>	<b>US</b>
<b>1200</b> 1200W	<b>Inventronics</b>	<b>US</b>
<b>1500</b> 1500W	<b>US</b>	<b>US</b>
<b>1800</b> 1800W	<b>US</b>	<b>US</b>

### ACCESSORIES

**LP**  
LASER POINTER

