

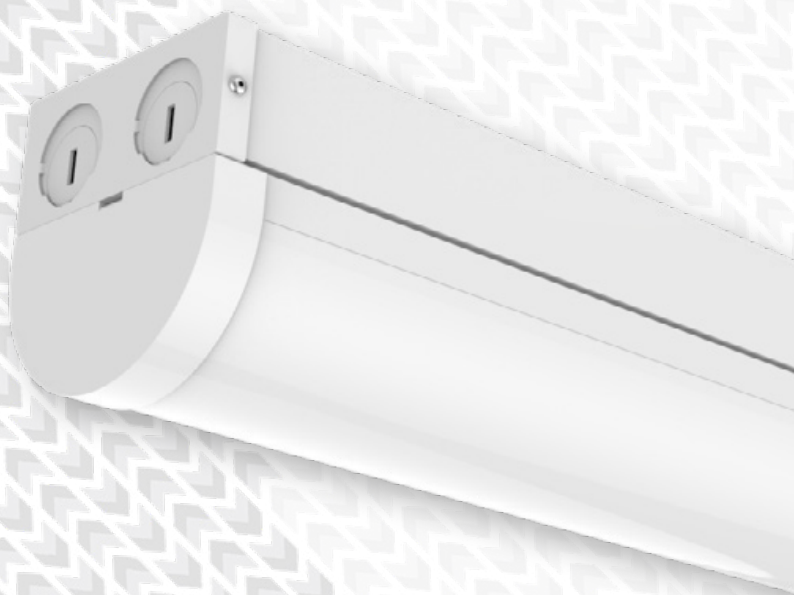


Versatile, commercial batten fittings designed for widespread use throughout offices, education facilities, retail areas, & the service industry

15W-54W series power range -
4ft, 5ft luminaire lengths ->140lm/W
family efficacy - Wide dispersion,
general-purpose optics - Superior
colour rendering capabilities -
Integrated, standalone, & wireless
network, intelligent control options
available

CE & RoHS
international product marks

Nicholson 2 Series Batten Light Fittings



CDN:SPEC159REV1

Technical Specifications Summary



Performance Summary:

Code (Series-Wattage/Size)	NIC2-15D	NIC2-24D	NIC2-36D	NIC2-36A	NIC2-54A
Nominal Power	15W	24W	36W	36W	54W
Luminaire Efficacy @ CRI>80, 4000K CCT	149lm/W		131lm/W		
Lumen Output @ CRI>80, 4000K CCT	2,235lm	3,576lm	5,364lm	4,716lm	7,074lm
Lumen Maintenance (TM21 Reported)	L70B20 ≥60,000 hours @ Tc 55°C				
Lumen Maintenance (TM21 Calculated)	L70B20 ≥127,000 hours @ Tc 55°C				
Certification	CE, RoHS				
Product Warranty	5 Years				

Light Source and Photometric Parameters:

Chip Brand, Model, & Size	San'an 2835
Light Emission	Direct
CCT	4000K, (3000K, 5000K, 6500K optional)
CRI	≥80, (≥90 optional)
SDCM	<5, (<3 optional)
Diffusers	Frosted
Symmetric Light Distribution	120°
Typical UGR ¹	≤25

Electrical Parameters²:

System Operating Power	15W	24W	36W	54W
Driver Brand	Lifud			
Input Voltage	220-240VAC			
Input Frequency	50-60Hz			
Power Factor	>0.9			
THD	<20% (220-240VAC)			

Environmental Parameters:

IP Rating	IP20
IK Rating	IK03
Ambient Usage Tolerance	-20°C to 40°C
Ambient Storage Tolerance	-40°C to 85°C
Ambient Humidity Tolerance	10% to 80% RH

Physical/Mechanical Parameters:

Product Dimensions: LxWxH (mm)	1200 x 86 x 90	1500 x 86 x 90
Electrical Connection	Terminal Block or 1000mm Cable	
Fixture Weight ³	2.28kg	2.98kg
Fixture Primary Material(s)	Aluminium Alloy & Steel	
Fixture Finish	Painted	
Lens(es) Materials	UV Stabilised Polycarbonate	

Technical Specifications Summary

Code (Series-Wattage/Size)	NIC2-15D	NIC2-24D	NIC2-36D	NIC2-36A	NIC-56A
Dimming/Controls Parameters:					
Dimming Options	1-10V, DALI				
Built-in Controls	Microwave Sensor				
Compatible intelligent lighting systems	Wireless Controls and Monitoring				
Options/Accessories:					
Mounting Styles	Twin Surface/Trunking Bracket, Cable Suspension				
Miscellaneous Accessories	3 Hour Emergency (Remote Test)				
Available Product Colours	White				

¹ UGR varies with light distribution. For further details contact our office

² Electrical Parameter data is for D1 drivers, unless otherwise stated

³ Excludes bracketry. Refer to the Packaging Weights & Dimensions data sheet for bracketry and accessory weights

All stated values should be considered indicative only. Technical data is provided from sample luminaires and construction components as assessed by OEM(s) under industry-standard, laboratory conditions. In practice, stated values can vary. Kellwood Lighting operates a policy of continual product improvement. Our luminaires' capabilities are regularly enhanced to outperform in-class market alternatives. Please contact our technical team directly for clarifications prior to purchase. All images depicted should be considered indicative only. Stated product warranty periods do not include associated labour costs. Stated product warranty periods are for UK projects only. For international projects, please contact our offices directly. Optional upgrades can often affect or supersede unit technical parameters, capabilities, and warranties. It is the responsibility of the purchasing authority to ensure selected hardware is suitable for application. For further documentation, including Returns Policy and Conditions of Unit Failure, please contact our offices. Hazardous area documentation (eg. ATEX) are issued to OEM codes. WEEE compliance reference code: WEE/MP3838PR/SCH. Please do not look directly at LED lighting products during operation.

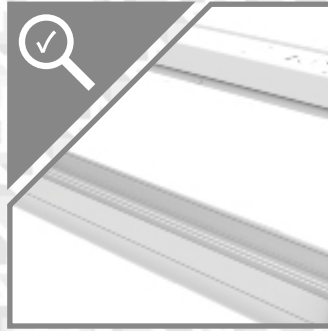
This datasheet & corresponding certification should be reviewed by a competent person to ensure project suitability.

©2020 Kellwood Engineering Ltd. All rights reserved.



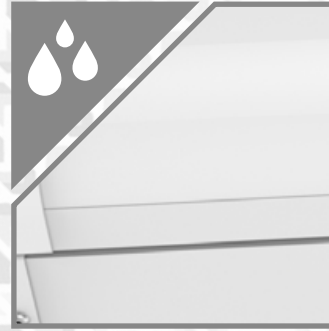
Mounting Options

BESA surface mount, wire suspension



Special Features

Tool-free connection through innovative 2-piece design allows rapid low cost installation



Environmental Protection

IP20, painted finish



Driver Protocols

Non-dimming, 1-10V, DALI



Impact Protection

IK08v rated



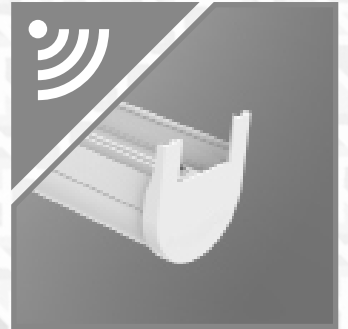
Distribution

General-purpose symmetrical dispersion pattern suitable for most applications



Glare Reduction

Frosted, glare reducing polycarbonate diffuser



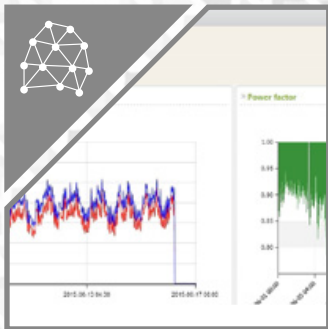
Sensor(s)

Integrated, standalone (single or multiple luminaires per sensor options)



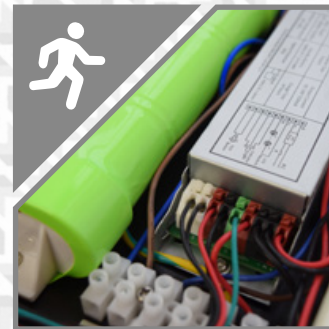
Sensor Functions

Occupancy, multi-step dimming, photocell, daylight harvesting



Advanced Controls

System energy reports, data monitoring, IoT (wireless/wired/mesh) networks



Emergency Operation

Maintained, 3 hour emergency function (integrated)



Standard product code fields are presented as:
Further customisation may be available - please contact us if required



Product Ordering Codes

PRODUCT	POWER	CRI & CCT	OPTIC	DRIVER	MOUNTING	CONFIGURABLE OPTIONS
NIC2	36A 36W 1500mm	830 CRI >80, 3000K	FR FROSTED DIFFUSER	D1 NON-DIM	TT TWIN SURFACE/TRUNKING BRACKETS	E3R1 INTEGRATED 3 HOUR MAINTAINED EMERGENCY (REMOTE TEST)
	54A 54W 1500mm	840 CRI >80, 4000K		D2 1-10V		
	15D 15W 1200mm	850 CRI >80, 5000K		D3 DALI		
	24D 24W 1200mm	865 CRI >80, 6500K		D4M1 COMBINED 1-10V DRIVER & MICROWAVE SENSOR		
	36D 36W 1200mm	930 CRI >90, 3000K				
		940 CRI >90, 4000K				
		950 CRI >90, 5000K				
		965 CRI >90, 6500K				

Product Ordering Code Example:

NIC2-24D-850-FR-D1-TT

NIC2-15D-865-FR-D3-TT-E3R1

DRIVER MANUFACTURER			
POWER	D1	D2	D3
36A 36W 5ft	Lifud	Lifud	Osram
54A 54W 5ft	Lifud	Lifud	Osram
15D 15W 4ft	Lifud	Lifud	Osram
24D 24W 4ft	Lifud	Lifud	Osram
36D 36W 4ft	Lifud	Lifud	Osram

GENERAL NOTES:

- IF MORE THAN ONE MODIFICATION IS REQUIRED, SEPARATE EACH MODIFICATION WITH A HYPHEN AT THE END OF THE PRODUCT CODE
- PLEASE ENSURE SELECTION OF COMPATIBLE DRIVER FOR OCCUPANCY SENSORS WITH DIMMING FUNCTIONALITY
- PLEASE NOTE THAT MODIFICATIONS WHICH AFFECT LIGHT OUTPUT HAVE SEPARATE PHOTOMETRIC FILES IDENTIFIED WITH "...+(MODIFICATION)"
- ALTERNATIVE DRIVERS MAY BE AVAILABLE - PLEASE CONTACT OUR OFFICE FOR FURTHER DETAILS
- IF PRODUCT IS CUSTOMISED, CODES WILL BE ALTERED AS NECESSARY

CONTACT OUR OFFICE FOR FURTHER INFORMATION ON DRIVER PARAMETERS

