



Group II, Zone 1,
hazardous area
maintained emergency
signage

Ex II 2 GD
Ex db eb IIC T6 Gb
Ex tb IIIC T80°C Db IP66

CE, RoHS, & ATEX
international product
marks



Shepherd 3 Series *Explosion Proof Emergency Exit Signs*

CDN:SPEC253REV0



Technical Specifications Summary

Performance Summary:

Code (Series-Wattage/Size)	SHE3-12
Operating Power (Mains)	12W
Operating Power (Battery)	5W
Lumen Maintenance	L70B50 ≥ 100,000 hours
Certification	CE, ATEX
Product Warranty	3 Years
Test Function	Remote-Test, Self-Test

Light Source and Photometric Parameters:

Chip Brand, Model, & Size	Osram
Light Emission	Direct
CCT	5700K
CRI	≥80
Diffusers	ISO-compliant emergency exit legends: Arrow Up, Arrow Down, Arrow Left, Arrow Right

Electrical Parameters:

System Operating Power	12W
System Power Factor	≥0.9
Input Voltage	220-240VAC
Input Frequency	50-60Hz
THD	<10%
Insulation Class	I
Surge Protection/Fusing	4kV line-line, 6kV line-earth

Environmental Parameters:

IP Rating	IP66
IK Rating	IK07
Ambient Usage Tolerance	-20°C to 55°C
Ambient Storage Tolerance	-20°C to 55°C

Physical/Mechanical Parameters:

Product Dimensions: LxWxH (mm)	513 x 187 x 155
Electrical Connection	Terminal Block 1mm ² to 4mm ²
Wire-In-Wire-Out Installation	Yes
Inlet Thread	M20 (M20x1.5), M25 (M25x1.5), NPT3/4"
Gland Type ^{2,3}	Brass with Nickel Plated Non-Armoured (Armoured optional)
Suitable Cable Size (ø) ⁴	M20 = 6.1-13.2mm, M25 = 9.5-15.9mm, NPT3/4" = 12.5-20.5mm
Fixture Weight ⁵	6.5kg
Fixture Primary Material(s)	6063 Copper-Free Aluminium Alloy (≤0.1% Copper) and 316 Stainless Steel Fixings
Fixture Finish	Epoxy Powder Coated
Lens(es) Materials	Tempered Glass

Options/Accessories:

Mounting Styles	Twin Surface
Available Product Colours	Grey (RAL7040)
Enhanced Protection	IIC Hydrogen Variant

¹ Details are for standard non-dimming driver

² Wire-in-wire-out compatible products supplied with one non-armoured ATEX certified gland and one ATEX certified blanking plug.

³ Armoured Cable gland available as an optional accessory. Please contact Kellwood for more information.

⁴ Stated cable size is applicable to standard gland. Armoured cable may vary, contact Kellwood for more information.

⁵ Excludes bracketry. Refer to the Packaging Weights & Dimensions data sheet for bracketry and accessory weights



Technical Specifications Summary

Certifications			
Division	ATEX Zone 1 & 21 and 2 & 22		
Product Marking ATEX Certificate Issue 01	<div>Ⓔ II 2 G D</div> <div>Ex db eb IICT* Gb</div> <div>Ex tb IIIC T* Db (IP66)</div> <div>*for further information please see temperate table</div>		
	Temperature Table		
	Product	Rated Power (Watts)	Temperature Class
-20° to 55°C (Ta)			
Gas			Dust
Shepherd 3 Series	12W	T6	T80°C
Certificate Number			
ATEX	TUV 15 ATEX 7673 X		

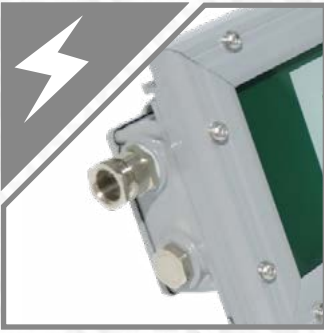
All stated values should be considered indicative only. Technical data is provided from sample luminaires and construction components as assessed by OEM(s) under industry-standard, laboratory conditions. In practice, stated values can vary. Kellwood Lighting operates a policy of continual product improvement. Our luminaires' capabilities are regularly enhanced to outperform in-class market alternatives. Please contact our technical team directly for clarifications prior to purchase. All images depicted should be considered indicative only. Stated product warranty periods do not include associated labour costs. Stated product warranty periods are for UK projects only. For international projects, please contact our offices directly. Optional upgrades can often affect or supersede unit technical parameters, capabilities, and warranties. It is the responsibility of the purchasing authority to ensure selected hardware is suitable for application. For further documentation, including Returns Policy and Conditions of Unit Failure, please contact our offices. Hazardous area documentation (eg. ATEX) are issued to OEM codes. Please do not look directly at LED lighting products during operation.

This datasheet & corresponding certification should be reviewed by a competent person to ensure project suitability.

©2025 Kellwood Lighting Ltd. All rights reserved.



Technical Specifications Summary



Input Voltage

Suitable for connection to 220-240VAC electrical supplies.



Special Features

Terminal block enclosure covers are secured to the luminaire for easier installation & faster maintenance.



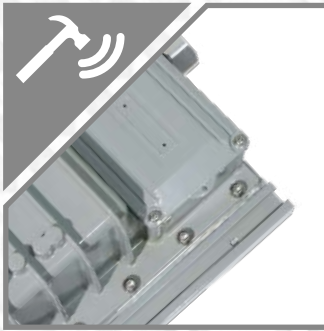
Environmental Protection

IP66, copper-free aluminium body c/w corrosion resistant paint finish. Salt spray test reports available.



Emergency Options

5W 3hr switchable-maintained or non-maintained with remote-test or self-test functionality



Impact Protection

IK07 rated with tempered glass front-face.



Inlet Thread Options

Inlet threads can be machined to M20, M25, or NPT3/4" – options to suit Kellwood-supplied glands, or to meet a site-standard



Status Indicator

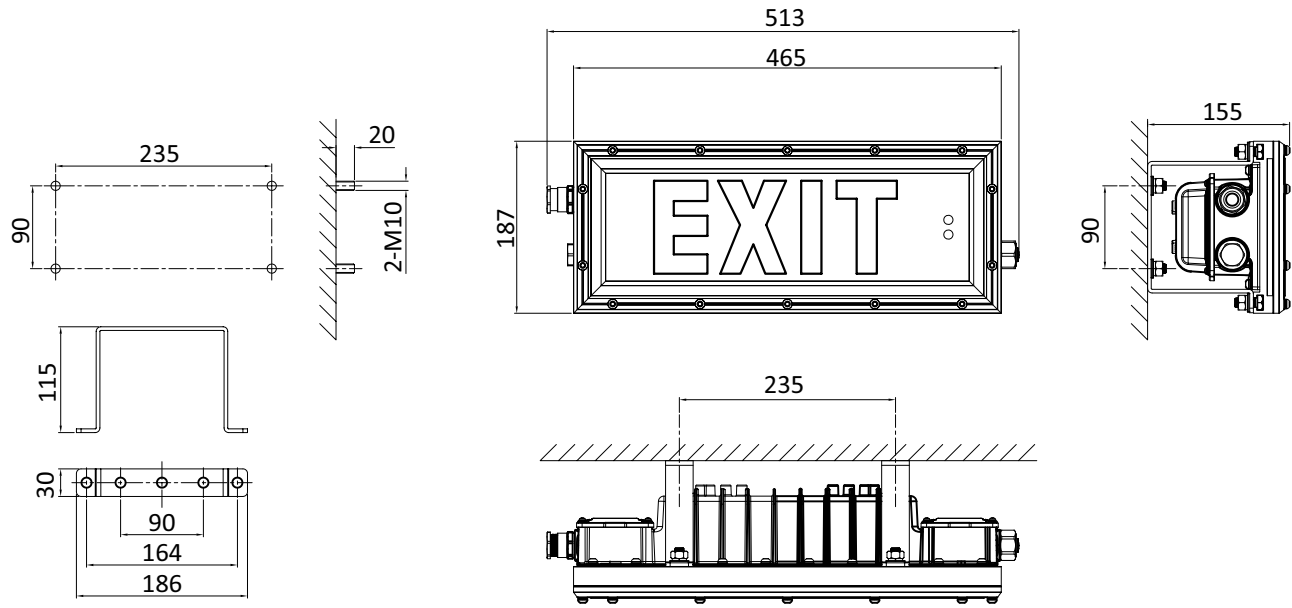
Emergency status indicator for battery health and emergency mode is positioned for.



Glands & Stopper Plugs

Multiple ATEX-certified gland types available, suitable for standard or armoured cable types. NB Supplied with one no. non-armoured gland and one blanking plug as standard.

Technical Specifications Summary



Units in mm

Legend Options

E3R1-AU



E3R1-AL



E3R1-AD



E3R1-AR





Standard product code fields are presented as:

Further customisation may be available - please contact us if required



Product Ordering Codes

PRODUCT	POWER	DRIVER	MOUNTING	COLOUR	THREAD	EMERGENCY & CONFIGURABLE OPTIONS
SHE3	12 12W, 2ft	V4 INPUT VOLTAGE 220-240 VAC	TM TWIN SURFACE MOUNT BRACKETS	GR GREY	I1 M25 INLET THREAD	E3R1-AD INTEGRATED 3 HOUR SW MAINTAINED EMERGENCY (REMOTE TEST) ARROW DOWN
					I2 NPT3/4" INLET THREAD	E3R1-AL INTEGRATED 3 HOUR SW MAINTAINED EMERGENCY (REMOTE TEST) ARROW LEFT
					I4 M20 INLET THREAD	E3R1-AR INTEGRATED 3 HOUR SW MAINTAINED EMERGENCY (REMOTE TEST) ARROW RIGHT
						E3R1-AU INTEGRATED 3 HOUR SW MAINTAINED EMERGENCY (REMOTE TEST) ARROW UP

Product Ordering Code Examples:

*SHE3-18A-V4-TM-GR-I1-E3R1-AD**SHE3-18A-V4-TM-GR-I3-E3R1-AL*

BRACKETS & ACCESSORIES	
CODE	DESCRIPTION
SHE3-TM	TWIN SURFACE MOUNT BRACKETS FOR SHEPHERD 3 SERIES

CONTACT OUR OFFICE FOR FURTHER INFORMATION ON DRIVER PARAMETERS

GENERAL NOTES:

1. IF MORE THAN ONE MODIFICATION IS REQUIRED, SEPARATE EACH MODIFICATION WITH A HYPHEN AT THE END OF THE PRODUCT CODE
2. PLEASE ENSURE SELECTION OF COMPATIBLE DRIVER FOR OCCUPANCY SENSORS WITH DIMMING FUNCTIONALITY
3. PLEASE NOTE THAT MODIFICATIONS WHICH AFFECT LIGHT OUTPUT HAVE SEPARATE PHOTOMETRIC FILES IDENTIFIED WITH "...+(MODIFICATION)"
4. ALTERNATIVE DRIVERS MAY BE AVAILABLE - PLEASE CONTACT OUR OFFICE FOR FURTHER DETAILS
5. IF PRODUCT IS CUSTOMISED, CODES WILL BE ALTERED AS NECESSARY - HAZARDOUS AREA CERTIFIED PRODUCT MODIFICATIONS ARE TYPICALLY LIMITED TO BRACKETRY (TO ENSURE COMPLIANCE WITH CERTIFICATION)
6. HAZARDOUS AREA CERTIFIED PRODUCTS ARE LISTED USING KELLWOOD'S STANDARD ORDERING CODE TEMPLATE FOR MARKETING PURPOSES. PRODUCTS WILL BE SUPPLIED WITH OEM NAMEPLATES, CODES & DOCUMENTATION CORRESPONDING TO PRODUCT CERTIFICATION

