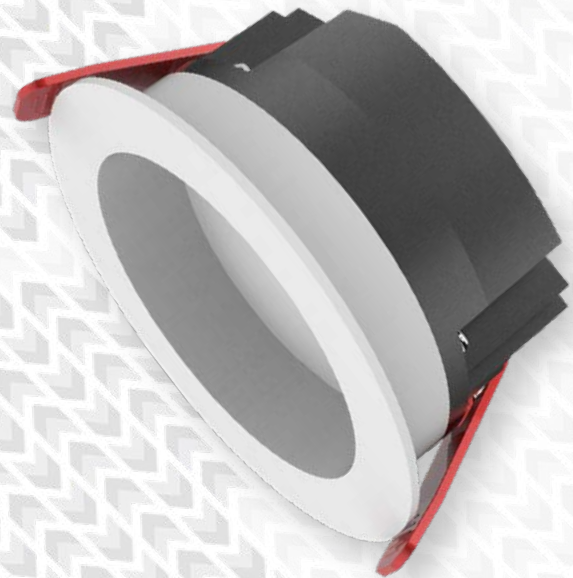


Multi-purpose commercial downlights  
- Developed for turnkey coverage throughout commercial, industrial, and public buildings, including offices, laboratories, clean-rooms, food preparation zones, & swimming pools

10W-50W family power range - 3", 4", 6", & 8" product diameters - 100-240VAC input - Water-proofed IP65 luminaire & power supply - Choice of accent halos for architectural applications & personalisation - Quick-install design - Recessed light source offers low-glare performance - Non-integrated intelligent control options available

CE & RoHS international product marks



## *Whitelaw Series*

# *Universal IP65 Downlights & Spot Lights*

CDN:SPEC108REV9

# Technical Specifications Summary



## Performance Summary:

Code (Series-Wattage/Size)	WHI-10D	WHI-15A	WHI-20A	WHI-20B	WHI-30B	WHI-40B	WHI-30C	WHI-40C	WHI-50C
Nominal Power	10W	15W	20W	20W	30W	40W	30W	40W	50W
Luminaire Efficacy @ CRI>80, 3000K CCT	71lm/W	88lm/W	78lm/W	84lm/W	81lm/W	85lm/W	85lm/W	87lm/W	85lm/W
Lumen Output @ CRI>80, 3000K CCT	710lm	1,320lm	1,560lm	1,680lm	2,430lm	3,400lm	2,550lm	3,480lm	4,250lm
Lumen Maintenance (TM21 Reported)	L70B50 ≥50,000 hours @ 25°C								
Certification	CE, RoHS								
Product Warranty	3 Years								

## Light Source and Photometric Parameters:

Chip Brand, Model, & Size	Samsung 2835 / Lumileds 2835								
Light Emission	Direct								
CCT	4000K (2700K, 3000K, 5000K, 6500K Optional)								
CRI	≥80Ra, (≥90Ra optional)								
SDCM	<3								
Diffusers	Frosted								
Symmetric Light Distribution	90° (10-40W), 70° (50W)								
Typical UGR <sup>1</sup>	<21								

## Electrical Parameters:

System Operating Power	10W	15W	20W	20W	30W	40W	30W	40W	50W
Driver Brand	Hongke								
Input Voltage	100-240VAC								
Input Frequency	50-60Hz								
Qty of Drivers per Light	1								
Power Factor	>0.9								
THD	<20% (100-277VAC)								
Insulation Class	Class II								

## Environmental Parameters:

IP Rating	IP65								
IK Rating	IK05								
Ambient Usage Tolerance	-20°C to 40°C								
Ambient Storage Tolerance	-30°C to 60°C								
Ambient Humidity Tolerance	15% to 90% RH								

## Physical/Mechanical Parameters:

Product Dimensions: (Ø <sup>2</sup> x H) (mm)	103 x 58	144 x 71	144 x 71	183 x 80	183 x 80	183 x 80	226 x 96	226 x 96	226 x 96
Cutout (Ø) (mm)	90-95	125-135	125-135	160-175	160-175	160-175	200-215	200-215	200-215
Electrical Connection	210mm 2-Core Cable								
Fixture Weight <sup>3</sup>	0.4kg	0.7kg	0.7kg	1.2kg	1.2kg	1.2kg	1.7kg	1.7kg	1.7kg
Fixture Primary Material(s)	Aluminium Alloy and Stainless Steel Fixings								
Fixture Finish	Painted								
Lens(es) Materials	UV Stabilised Polycarbonate								

## Technical Specifications Summary

Code (Series-Wattage/Size)	WHI-30D	WHI-15A	WHI-20A	WHI-20B	WHI-30B	WHI-40B	WHI-30C	WHI-40C	WHI-50C
<b>Options/Accessories:</b>									
<b>Mounting Styles</b>	Surface mounted, cable suspended								
<b>Miscellaneous Accessories</b>	Emergency Pack (Remote Test, Self Test)								
<b>Available Product Colours</b>	White, Black, Silver								

<sup>1</sup> Electrical Parameter data is for D1 drivers, unless otherwise stated

<sup>2</sup> Outer diameter of front face

<sup>3</sup> Excludes bracketry. Refer to the Packaging Weights & Dimensions data sheet for bracketry and accessory weights

All stated values should be considered indicative only. Technical data is provided from sample luminaires and construction components as assessed by OEM(s) under industry-standard, laboratory conditions. In practice, stated values can vary. Kellwood Lighting operates a policy of continual product improvement. Our luminaires' capabilities are regularly enhanced to outperform in-class market alternatives. Please contact our technical team directly for clarifications prior to purchase. All images depicted should be considered indicative only. Stated product warranty periods do not include associated labour costs. Stated product warranty periods are for UK projects only. For international projects, please contact our offices directly. Optional upgrades can often affect or supersede unit technical parameters, capabilities, and warranties. It is the responsibility of the purchasing authority to ensure selected hardware is suitable for application. For further documentation, including Returns Policy and Conditions of Unit Failure, please contact our offices. Hazardous area documentation (eg. ATEX) are issued to OEM codes. WEEE compliance reference code: WEE/MP3838PR/SCH. Please do not look directly at LED lighting products during operation.

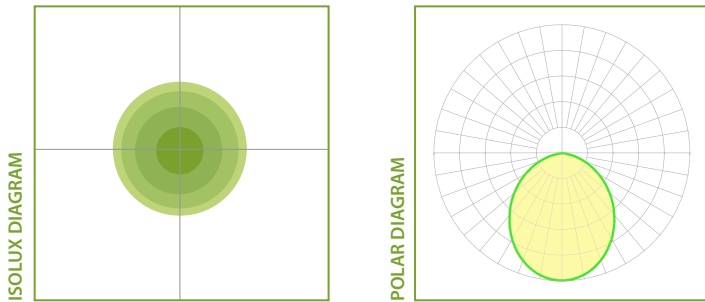
This datasheet & corresponding certification should be reviewed by a competent person to ensure project suitability.

©2020 Kellwood Engineering Ltd. All rights reserved.

Please note - images shown are intended to be illustrative only. For exact data, please refer to specific product photometry, available for download from our website.

## Indicative Product Photometry

### 90° Optic



### Diffusers

This series is available with the following diffusers. Each diffuser will have a varying effect on photometric distribution and intensity. Please refer to downloadable photometrics for exact data.

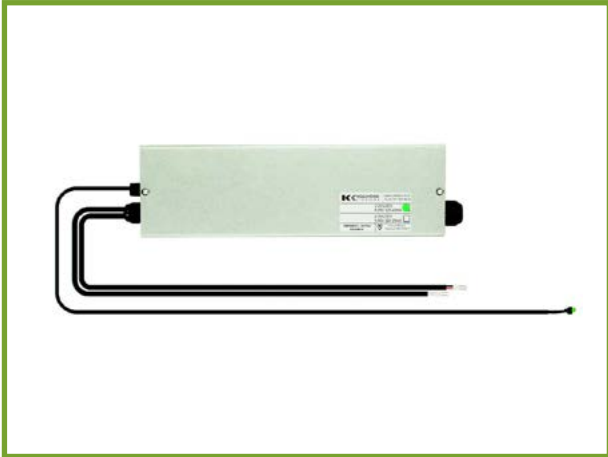


Frosted Cover

Images are illustrative of diffuser type only and not necessarily taken from this product series

Colourations on isolux diagrams are qualitative, i.e. the same colour on any two isolux diagrams will not necessarily have the same lux value.

## Emergency Options



### Emergency Packs

Premium plug and play, rapid installation option, available in remote-test, self-test and DALI variants. Incorporates luminaire driver, emergency switch electronics and battery.

Emergency LED status indicator light bush (IP20 variant) and deep discharge protection included.

IP65 - LED status indicator is mounted on enclosure. Suitable for applications where there is maintenance access from above.

IP20 - LED status indicator is supplied on an umbilical cord complete with mounting bush.

<b>Emergency Output</b>	≥ 3hrs @ 2.5W
<b>Ingress Protection</b>	IP65
<b>Size</b>	IP20: 300 x 90 x 42mm IP65: 222 x 146 x 110mm
<b>Warranty</b>	3 Years
<b>Battery Type</b>	NiCd
<b>Mains Supply</b>	230-240VAC @ 50/60Hz
<b>Mains Input Terminal</b>	1.0mm <sup>2</sup> to 2.5mm <sup>2</sup>
<b>Max Ta and Tc</b>	Ta 50°C, Tc 70°C
<b>Max Battery Temperature</b>	NiCd 55°C



### Emergency Kits

Available in remote-test, self-test and DALI variants. Compact design and incorporated strain relief allows installation as individual components in a ceiling cavity.

Emergency LED indicator light bush and deep discharge protection included.

<b>Emergency Output</b>	≥ 3hrs @ 2.5W
<b>Ingress Protection</b>	IP20
<b>Size</b>	Fits through 45mm aperture
<b>Warranty</b>	3 Years
<b>Battery Type</b>	NiCd or LiFePO <sub>4</sub>
<b>Mains Supply</b>	230-240VAC @ 50/60Hz
<b>Mains Input Terminal</b>	1.0mm <sup>2</sup> to 2.5mm <sup>2</sup>
<b>Max Ta and Tc</b>	Ta 50°C, Tc 70°C
<b>Max Battery Temperature</b>	NiCd 55°C LiFePO <sub>4</sub> 60°C

### LiFePO<sub>4</sub>

Some emergency products are available with Lithium Iron Phosphate (LiFePO<sub>4</sub>) batteries.

The two main advantages over traditional emergency lighting batteries are:

- Double the operational life
- Extremely low self discharge and power consumption under use. E.g. standby power of a Nickel Cadmium (NiCd) battery is 5W, whereas our equivalent LiFePO<sub>4</sub> battery would be 1.5W





Standard product code fields are presented as:  
Further customisation may be available - please contact us if required



## Product Ordering Codes

PRODUCT	POWER & SIZE	CRI & CCT	OPTIC	DRIVER	COLOUR	MODIFICATIONS
<b>WHI</b>	<b>10D</b> 10W, 90-95MM (CUT-OUT Ø)	<b>827</b> CRI>80, 2700K	<b>70<sup>1</sup></b> 70° Circular	<b>D1</b> NON-DIM	<b>WH</b> WHITE	<b>DE</b> REMOTE IP65 DRIVER ENCLOSURE
	<b>15A</b> 15W, 125-135MM (CUT-OUT Ø)	<b>830</b> CRI >80, 3000K	<b>90<sup>1</sup></b> 90° Circular	<b>D2<sup>2</sup></b> 1-10V DIM	<b>BL</b> BLACK	
	<b>20A</b> 20W, 125-135MM (CUT-OUT Ø)	<b>840</b> CRI >80, 4000K		<b>D3<sup>2</sup></b> DALI	<b>SI</b> SILVER	
	<b>20B</b> 20W, 160-175MM (CUT-OUT Ø)	<b>850</b> CRI >80, 5000K		<b>D4</b> NON-DIM - 25-42 VDC INPUT		
	<b>30B</b> 30W, 160-175MM (CUT-OUT Ø)	<b>865</b> CRI >80, 6500K		<b>D5</b> DALI		
	<b>40B</b> 40W, 160-175MM (CUT-OUT Ø)			<b>D7</b> NON-DIM		
	<b>30C</b> 30W, 200-215MM (CUT-OUT Ø)			<b>D8<sup>2</sup></b> TRIAC-DIMMING		
	<b>40C</b> 40W, 200-215MM (CUT-OUT Ø)					
	<b>50C</b> 50W, 200-215MM (CUT-OUT Ø)					

<sup>1</sup> The 50C version is only available with 70° optic. 10D-40C versions are only available with 90° optic.

<sup>2</sup> Driver is IP20

### Product Ordering Code Examples:

*WHI-20B-865-90-D1*

*WHI-50C-840-70-D1*

### Emergency Ordering Code Examples:

*WHI-E3R2-30-D1*

#### GENERAL NOTES:

1. IF MORE THAN ONE MODIFICATION IS REQUIRED, SEPARATE EACH MODIFICATION WITH A HYPHEN AT THE END OF THE PRODUCT CODE
2. PLEASE ENSURE SELECTION OF COMPATIBLE DRIVER FOR OCCUPANCY SENSORS WITH DIMMING FUNCTIONALITY
3. PLEASE NOTE THAT MODIFICATIONS WHICH AFFECT LIGHT OUTPUT HAVE SEPARATE PHOTOMETRIC FILES IDENTIFIED WITH "...+(MODIFICATION)"
4. ALTERNATIVE DRIVERS MAY BE AVAILABLE - PLEASE CONTACT OUR OFFICE FOR FURTHER DETAILS
5. IF PRODUCT IS CUSTOMISED, CODES WILL BE ALTERED AS NECESSARY

#### DRIVER MANUFACTURER

POWER	D1	D2	D3	D4	D5	D7	D8
<b>10D</b> 10W, 90-95MM (CUT-OUT Ø)	Hongke	Euchips	Euchips	Hongke	Boke	Chipmap	Boke
<b>15A</b> 15W, 125-135MM (CUT-OUT Ø)	Hongke	Euchips	Euchips	Hongke	Boke	Chipmap	Boke
<b>20A</b> 20W, 125-135MM (CUT-OUT Ø)	Hongke	Euchips	Euchips	Hongke	Boke	Chipmap	Boke
<b>20B</b> 20W, 160-175MM (CUT-OUT Ø)	Hongke	Euchips	Euchips	Hongke	Boke	Chipmap	Boke
<b>30B</b> 30W, 160-175MM (CUT-OUT Ø)	Hongke	Euchips	Euchips	Hongke	Boke	Chipmap	Boke
<b>40B</b> 40W, 160-175MM (CUT-OUT Ø)	Hongke	Euchips	Euchips	Hongke	Boke	Chipmap	Boke
<b>30C</b> 30W, 200-215MM (CUT-OUT Ø)	Hongke	Euchips	Euchips	Hongke	Boke	Chipmap	Boke
<b>40C</b> 40W, 200-215MM (CUT-OUT Ø)	Hongke	Euchips	Euchips	Hongke	Boke	Chipmap	Boke
<b>50C</b> 50W, 200-215MM (CUT-OUT Ø)	Hongke	Euchips	Euchips	Hongke	Boke	Chipmap	Boke

#### ACCESSORIES

<b>WHI-E3R2-"POWER"- "DRIVER"</b> 3HR MAINTAINED EMERGENCY PACK - REMOTE TEST - IP65
<b>WHI-E3S2-"POWER"- "DRIVER"</b> 3HR MAINTAINED EMERGENCY PACK - SELF-TEST - IP65
<b>WHI-E3R2-"POWER"- "DRIVER"-IP20</b> 3HR MAINTAINED EMERGENCY PACK - REMOTE TEST - IP20
<b>WHI-E3S2-"POWER"- "DRIVER"-IP20</b> 3HR MAINTAINED EMERGENCY PACK - SELF-TEST - IP20

