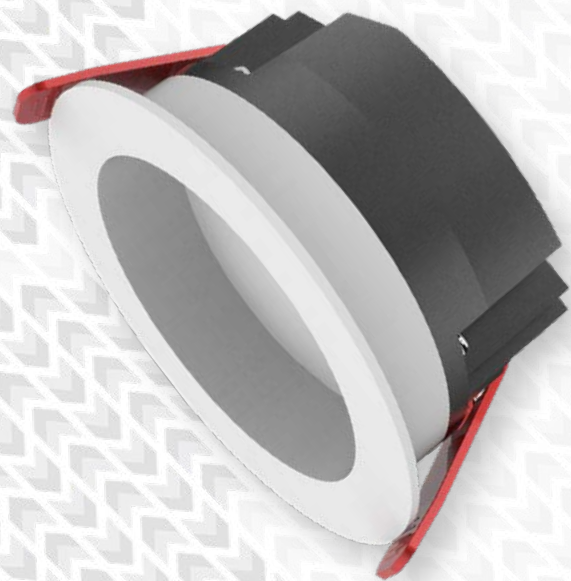




Multi-purpose commercial downlights  
- Developed for turnkey coverage throughout commercial, industrial, and public buildings, including offices, laboratories, clean-rooms, food preparation zones, & swimming pools

10W-40W family power range - 3", 4", 6", & 8" product diameters - 100-240VAC input - Water-proofed IP65 luminaire & power supply - Choice of accent halos for architectural applications & personalisation - Quick-install design - Recessed light source offers low-glare performance - Non-integrated intelligent control options available

CE & RoHS  
international product marks



## *Whitelaw 2 Series*

# *High-Output Universal IP65 Downlights*

CDN:SPEC123REV0

# Technical Specifications Summary



## Performance Summary:

Code (Series-Wattage/Size)	WHI2-10D	WHI2-15A	WHI2-20A	WHI2-20B	WHI2-25B	WHI2-40B	WHI2-25C	WHI2-40C
Nominal Power	10W	15W	20W	20W	25W	40W	25W	40W
Luminaire Efficacy @ CRI>80, 4000K CCT	126lm/W	137lm/W	137lm/W	153lm/W	153lm/W	149lm/W	156lm/W	151lm/W
Lumen Output @ CRI>80, 4000K CCT	1,260lm	2,055lm	2,740lm	3,060lm	3,825lm	5,960lm	3,900lm	6,040lm
Lumen Maintenance (TM21 Reported)	L70B50 ≥50,000 hours @ 25°C							
Certification	CE, RoHS							
Product Warranty	3 Years							

## Light Source and Photometric Parameters:

Chip Brand, Model, & Size	Sanan 2835							
Light Emission	Direct							
CCT	4000K (2700K, 3000K, 5000K, 6500K Optional)							
CRI	≥80Ra, (≥90Ra optional)							
SDCM	<5							
Diffusers	Frosted							
Symmetric Light Distribution	90°							

## Electrical Parameters:

System Operating Power	10W	15W	20W	20W	30W	40W	30W	40W
Driver Brand	Hongke							
Input Voltage	100-240VAC							
Input Frequency	50-60Hz							
Qty of Drivers per Light	1							
Power Factor	>0.9							
THD	<20% (100-277VAC)							
Insulation Class	Class II							

## Environmental Parameters:

IP Rating	IP65							
IK Rating	IK05							
Ambient Usage Tolerance	-20°C to 40°C							
Ambient Storage Tolerance	-30°C to 60°C							
Ambient Humidity Tolerance	15% to 90% RH							

## Physical/Mechanical Parameters:

Product Dimensions: (Ø <sup>2</sup> x H) (mm)	103 x 58	144 x 71	144 x 71	183 x 80	183 x 80	183 x 80	226 x 96	226 x 96
Cutout (Ø) (mm)	90-95	125-135	125-135	160-175	160-175	160-175	200-215	200-215
Electrical Connection	210mm 2-Core Cable							
Fixture Weight <sup>3</sup>	0.4kg	0.7kg	0.7kg	1.2kg	1.2kg	1.2kg	1.7kg	1.7kg
Fixture Primary Material(s)	Aluminium Alloy and Stainless Steel Fixings							
Fixture Finish	Painted							
Lens(es) Materials	UV Stabilised Polycarbonate							



# Technical Specifications Summary

Code (Series-Wattage/Size)	WHI2-10D	WHI2-15A	WHI2-20A	WHI2-20B	WHI2-25B	WHI2-40B	WHI2-25C	WHI2-40C
<b>Options/Accessories:</b>								
<b>Mounting Styles</b>	Surface mounted, cable suspended							
<b>Miscellaneous Accessories</b>	Emergency Pack (Remote Test, Self Test)							
<b>Available Product Colours</b>	White, Black, Silver							

<sup>1</sup> Electrical Parameter data is for D1 drivers, unless otherwise stated

<sup>2</sup> Outer diameter of front face

<sup>3</sup> Excludes bracketry. Refer to the Packaging Weights & Dimensions data sheet for bracketry and accessory weights

All stated values should be considered indicative only. Technical data is provided from sample luminaires and construction components as assessed by OEM(s) under industry-standard, laboratory conditions. In practice, stated values can vary. Kellwood Lighting operates a policy of continual product improvement. Our luminaires' capabilities are regularly enhanced to outperform in-class market alternatives. Please contact our technical team directly for clarifications prior to purchase. All images depicted should be considered indicative only. Stated product warranty periods do not include associated labour costs. Stated product warranty periods are for UK projects only. For international projects, please contact our offices directly. Optional upgrades can often affect or supersede unit technical parameters, capabilities, and warranties. It is the responsibility of the purchasing authority to ensure selected hardware is suitable for application. For further documentation, including Returns Policy and Conditions of Unit Failure, please contact our offices. Hazardous area documentation (eg. ATEX) are issued to OEM codes. Please do not look directly at LED lighting products during operation.

This datasheet & corresponding certification should be reviewed by a competent person to ensure project suitability.

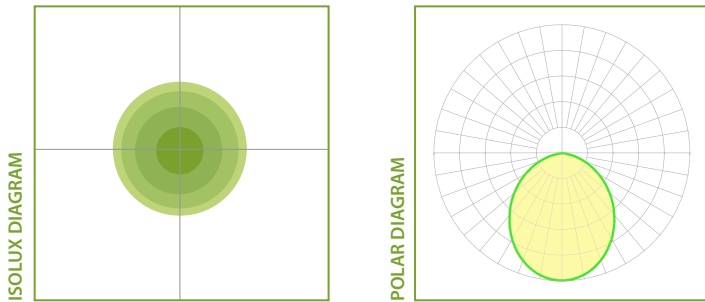
©2024 Kellwood Lighting Ltd. All rights reserved.



Please note - images shown are intended to be illustrative only. For exact data, please refer to specific product photometry, available for download from our website.

## Indicative Product Photometry

### 90° Optic >>



### Diffusers >>

This series is available with the following diffusers. Each diffuser will have a varying effect on photometric distribution and intensity. Please refer to downloadable photometrics for exact data.



Frosted Cover

Images are illustrative of diffuser type only and not necessarily taken from this product series

Colourations on isolux diagrams are qualitative, i.e. the same colour on any two isolux diagrams will not necessarily have the same lux value.



Standard product code fields are presented as:  
Further customisation may be available - please contact us if required



## Product Ordering Codes

PRODUCT	POWER & SIZE	CRI & CCT	OPTIC	DRIVER	COLOUR	MODIFICATIONS
<b>WHI2</b>	<b>10D</b> 10W, 90-95MM (CUT-OUT Ø)	<b>827</b> CRI>80, 2700K	<b>90</b> 90° Circular	<b>D1</b> NON-DIM	<b>WH</b> WHITE	<b>DE</b> REMOTE IP65 DRIVER ENCLOSURE
	<b>15A</b> 15W, 125-135MM (CUT-OUT Ø)	<b>830</b> CRI >80, 3000K		<b>D2<sup>1</sup></b> 1-10V DIM	<b>BL</b> BLACK	
	<b>20A</b> 20W, 125-135MM (CUT-OUT Ø)	<b>840</b> CRI >80, 4000K		<b>D3<sup>1</sup></b> DALI	<b>SI</b> SILVER	
	<b>20B</b> 20W, 160-175MM (CUT-OUT Ø)	<b>850</b> CRI >80, 5000K		<b>D4</b> NON-DIM - 25-42 VDC INPUT		
	<b>25B</b> 25W, 160-175MM (CUT-OUT Ø)	<b>865</b> CRI >80, 6500K		<b>D5</b> DALI		
	<b>40B</b> 40W, 160-175MM (CUT-OUT Ø)			<b>D7</b> NON-DIM		
	<b>25C</b> 25W, 200-215MM (CUT-OUT Ø)			<b>D8<sup>1</sup></b> TRIAC-DIMMING		
	<b>40C</b> 40W, 200-215MM (CUT-OUT Ø)					

## Product Ordering Code Examples:

**WHI2-20B-865-90-D1-WH****WHI2-40C-840-90-D1-WH**

## Emergency Ordering Code Examples:

**WHI2-E3R2-30-D1**<sup>1</sup> Driver is IP20

## GENERAL NOTES:

- IF MORE THAN ONE MODIFICATION IS REQUIRED, SEPARATE EACH MODIFICATION WITH A HYPHEN AT THE END OF THE PRODUCT CODE
- PLEASE ENSURE SELECTION OF COMPATIBLE DRIVER FOR OCCUPANCY SENSORS WITH DIMMING FUNCTIONALITY
- PLEASE NOTE THAT MODIFICATIONS WHICH AFFECT LIGHT OUTPUT HAVE SEPARATE PHOTOMETRIC FILES IDENTIFIED WITH "...+(MODIFICATION)"
- ALTERNATIVE DRIVERS MAY BE AVAILABLE - PLEASE CONTACT OUR OFFICE FOR FURTHER DETAILS
- IF PRODUCT IS CUSTOMISED, CODES WILL BE ALTERED AS NECESSARY

## DRIVER MANUFACTURER

POWER	D1	D2	D3	D4	D5	D7	D8
<b>10D</b> 10W, 90-95MM (CUT-OUT Ø)	Hongke	Euchips	Euchips	Hongke	Boke	Chipmap	Boke
<b>15A</b> 15W, 125-135MM (CUT-OUT Ø)	Hongke	Euchips	Euchips	Hongke	Boke	Chipmap	Boke
<b>20A</b> 20W, 125-135MM (CUT-OUT Ø)	Hongke	Euchips	Euchips	Hongke	Boke	Chipmap	Boke
<b>20B</b> 20W, 160-175MM (CUT-OUT Ø)	Hongke	Euchips	Euchips	Hongke	Boke	Chipmap	Boke
<b>25B</b> 25W, 160-175MM (CUT-OUT Ø)	Hongke	Euchips	Euchips	Hongke	Boke	Chipmap	Boke
<b>40B</b> 40W, 160-175MM (CUT-OUT Ø)	Hongke	Euchips	Euchips	Hongke	Boke	Chipmap	Boke
<b>25C</b> 25W, 200-215MM (CUT-OUT Ø)	Hongke	Euchips	Euchips	Hongke	Boke	Chipmap	Boke
<b>40C</b> 40W, 200-215MM (CUT-OUT Ø)	Hongke	Euchips	Euchips	Hongke	Boke	Chipmap	Boke

## ACCESSORIES

**WHI2-E3R2-"POWER"- "DRIVER"**  
3HR MAINTAINED EMERGENCY PACK - REMOTE TEST - IP65

**WHI2-E3S2-"POWER"- "DRIVER"**  
3HR MAINTAINED EMERGENCY PACK - SELF-TEST - IP65

**WHI2-E3R2-"POWER"- "DRIVER"-IP20**  
3HR MAINTAINED EMERGENCY PACK - REMOTE TEST - IP20

**WHI2-E3S2-"POWER"- "DRIVER"-IP20**  
3HR MAINTAINED EMERGENCY PACK - SELF-TEST - IP20

